

# CLTA Antibody



PACO44173

---

## Product Information

**Size:**

50ul

**Reactivity:**

Human

**Source:**

Rabbit

**Isotype:**

IgG

**Applications:**

ELISA, IHC

**Recommended dilutions:**

ELISA:1:2000-1:10000, IHC:1:20-1:200

**Protein Background:**

Clathrin is the major protein of the polyhedral coat of coated pits and vesicles.

**Gene ID:**

CLTA

**Uniprot**

P09496

**Synonyms:**

Clathrin light chain A (Lca), CLTA

**Immunogen:**

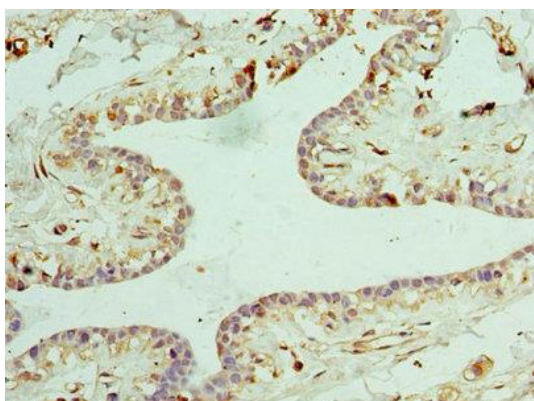
Recombinant Human Clathrin light chain A protein (1-218AA).

**Storage:**

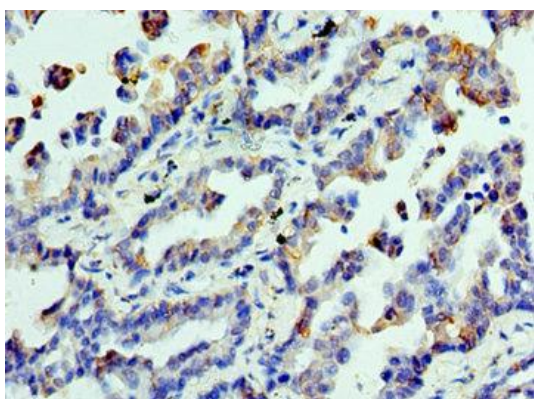
PBS with 0.02% sodium azide, 50% glycerol, pH7.3.

## Product Images

---



Immunohistochemistry of paraffin-embedded human breast cancer using PACO44173 at dilution of 1:100.



Immunohistochemistry of paraffin-embedded human lung cancer using PACO44173 at dilution of 1:100.