

## Product Information

**Size:**

50ul

**Reactivity:**

Human, Mouse

**Source:**

Rabbit

**Isotype:**

IgG

**Applications:**

ELISA, WB, IHC, IP

**Recommended dilutions:**

ELISA:1:2000-1:10000, WB:1:500-1:2000,  
IHC:1:20-1:200, IP:1:200-1:2000

**Protein Background:**

Implicated in immunoproteasome assembly and required for efficient antigen processing. The PA28 activator complex enhances the generation of class I binding peptides by altering the cleavage pattern of the proteasome.

**Gene ID:**

PSME1

**Uniprot**

Q06323

**Synonyms:**

Proteasome activator complex subunit 1 (11S regulator complex subunit alpha) (REG-alpha) (Activator of multicatalytic protease subunit 1) (Interferon gamma up-regulated I-5111 protein) (IGUP I-5111) (Proteasome activator 28 subunit alpha) (PA28a) (PA28alpha), PSME1, IFI5111

**Immunogen:**

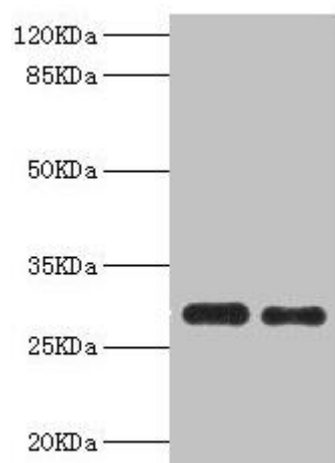
Recombinant Human Proteasome activator complex subunit 1 protein (1-249AA).

**Storage:**

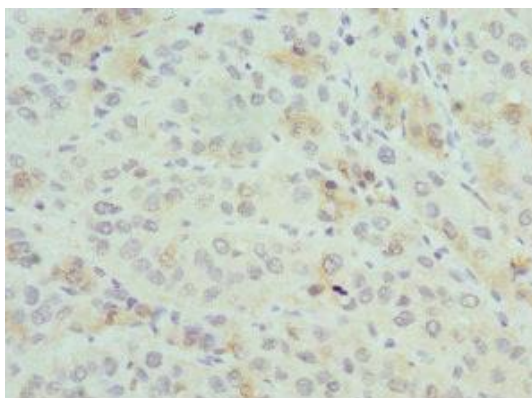
PBS with 0.02% sodium azide, 50% glycerol, pH7.3.

## Product Images

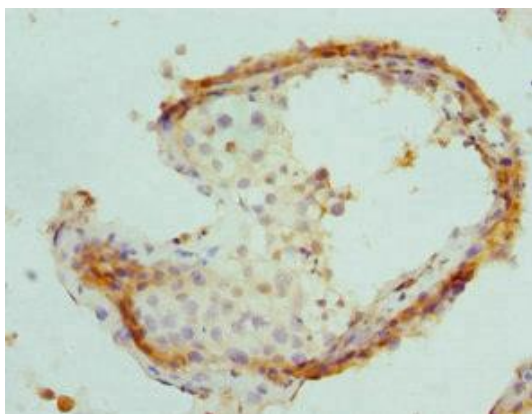
---



Western blot. All lanes: PSME1 antibody at 0.75 $\mu$ g/ml. Lane 1: Mouse liver tissue. Lane 2: Raji whole cell lysate. Secondary: Goat polyclonal to rabbit IgG at 1/10000 dilution. Predicted band size: 29, 27 kDa. Observed band size: 29 kDa.



Immunohistochemistry of paraffin-embedded human liver cancer using PACO44183 at dilution of 1:100.



Immunohistochemistry of paraffin-embedded human testis tissue using PACO44183 at dilution of 1:100.