

Product Information

Size:

50ul

Reactivity:

Human

Source:

Rabbit

Isotype:

IgG

Applications:

ELISA, IHC

Recommended dilutions:

ELISA:1:2000-1:10000, IHC:1:20-1:200

Protein Background:

The proteasome is a multicatalytic proteinase complex which is characterized by its ability to cleave peptides with Arg, Phe, Tyr, Leu, and Glu adjacent to the leaving group at neutral or slightly basic pH. The proteasome has an ATP-dependent proteolytic activity. This subunit is involved in antigen processing to generate class I binding peptides.

Gene ID:

PSMB10

Uniprot

P40306

Synonyms:

Proteasome subunit beta type-10 (EC 3.4.25.1) (Low molecular mass protein 10) (Macropain subunit MECL-1) (Multicatalytic endopeptidase complex subunit MECL-1) (Proteasome MECL-1) (Proteasome subunit beta-2i), PSMB10, LMP10 MECL1

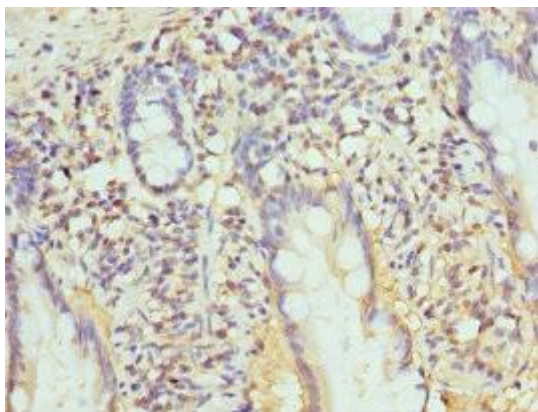
Immunogen:

Recombinant Human Proteasome subunit β type-10 protein (1-273AA).

Storage:

PBS with 0.02% sodium azide, 50% glycerol, pH7.3.

Product Images



Immunohistochemistry of paraffin-embedded human small intestine tissue using PACO44185 at dilution of 1:100.