

# IL31RA Antibody



PACO44223

---

## Product Information

**Size:**

50ul

**Reactivity:**

Human, Mouse

**Source:**

Rabbit

**Isotype:**

IgG

**Applications:**

ELISA, WB

**Recommended dilutions:**

ELISA:1:2000-1:10000, WB:1:1000-1:5000

**Protein Background:**

Associates with OSMR to form the interleukin-31 receptor which activates STAT3 and to a lower extent STAT1 and STAT5. May function in skin immunity. Mediates IL31-induced itch, probably in a manner dependent on cation channels TRPA1 and TRPV1. Positively regulates numbers and cycling status of immature subsets of myeloid progenitor cells in bone marrow in vivo and enhances myeloid progenitor cell survival in vitro.

**Gene ID:**

IL31RA

**Uniprot**

Q8NI17

**Synonyms:**

Interleukin-31 receptor subunit alpha (IL-31 receptor subunit alpha) (IL-31R subunit alpha) (IL-31R-alpha) (IL-31RA) (Cytokine receptor-like 3) (GLM-R) (hGLM-R) (Gp130-like monocyte receptor) (Gp130-like receptor) (ZcytoR17), IL31RA, CRL3 GPL

**Immunogen:**

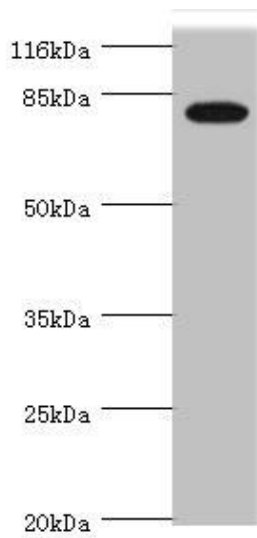
Recombinant Human Interleukin-31 receptor subunit &alpha; protein (1-300AA).

**Storage:**

PBS with 0.02% sodium azide, 50% glycerol, pH7.3.

## Product Images

---



Western blot. All lanes: IL31RA antibody at 1.45 $\mu$ g/ml + Mouse kidney tissue. Secondary. Goat polyclonal to rabbit IgG at 1/10000 dilution. Predicted band size: 83, 87, 75, 42, 78, 71, 59, 67, 64, 70, 85 kDa. Observed band size: 83 kDa.