

PACO44224

Product Information

Size:

50ul

Reactivity:

Human

Source:

Rabbit

Isotype:

IgG

Applications:

ELISA, WB, IHC

Recommended dilutions:

ELISA:1:2000-1:10000, WB:1:1000-1:5000,
IHC:1:20-1:200

Protein Background:

Chromatin reader that specifically recognizes and binds histone H3 both trimethylated at 'Lys-4' and asymmetrically dimethylated at 'Arg-8' (H3K4me3 and H3R8me2a) and acts as an activator of Wnt signaling pathway downstream of PRMT2. In case of cancer, promotes cell cancer proliferation via activation of the Wnt signaling pathway. Overexpression induces metaphase arrest and chromosomal instability. Localizes to active rDNA loci and promotes the expression of rRNA genes. May play a role in cell-cycle regulation during the transition from gamete to embryo. Involved in oocyte meiotic resumption, a process that takes place before ovulation to resume meiosis of oocytes blocked in prophase I: may act by regulating maternal transcripts to control meiotic resumption.

Gene ID:

SPIN1

Uniprot

Q9Y657

Synonyms:

Spindlin-1 (Ovarian cancer-related protein) (Spindlin1), SPIN1, OCR SPIN

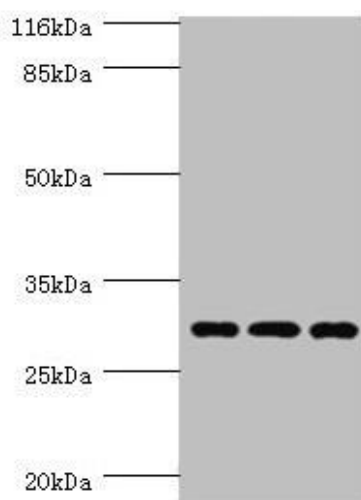
Immunogen:

Recombinant Human Spindlin-1 protein (1-262AA).

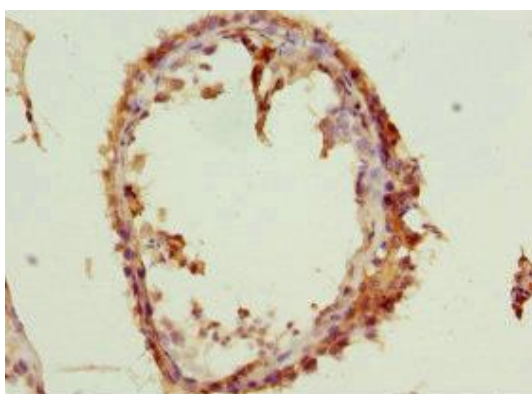
Storage:

PBS with 0.02% sodium azide, 50% glycerol, pH7.3.

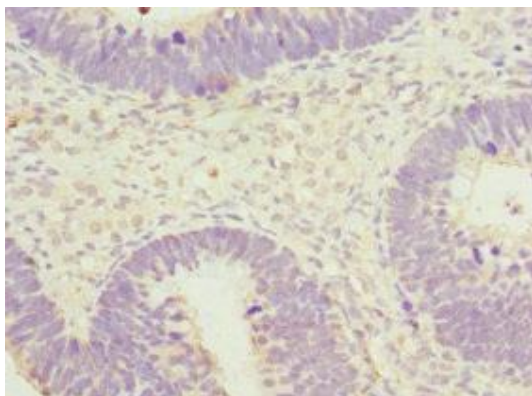
Product Images



Western blot. All lanes: SPIN1 antibody at 1.45 μ g/ml. Lane 1: HeLa whole cell lysate. Lane 2: 293T whole cell lysate. Lane 3: HepG2 whole cell lysate. Secondary: Goat polyclonal to rabbit IgG at 1/10000 dilution. Predicted band size: 30 kDa. Observed band size: 30 kDa.



Immunohistochemistry of paraffin-embedded human testis tissue using PACO44224 at dilution of 1:100.



Immunohistochemistry of paraffin-embedded human ovarian cancer using PACO44224 at dilution of 1:100.