

BCAP29 Antibody



PACO44229

Product Information

Size:

50ul

Reactivity:

Human, Rat

Source:

Rabbit

Isotype:

IgG

Applications:

ELISA, WB, IHC

Recommended dilutions:

ELISA:1:2000-1:10000, WB:1:1000-1:5000,
IHC:1:20-1:200

Protein Background:

May play a role in anterograde transport of membrane proteins from the endoplasmic reticulum to the Golgi. May be involved in CASP8-mediated apoptosis.

Gene ID:

BCAP29

Uniprot

Q9UHQ4

Synonyms:

B-cell receptor-associated protein 29 (BCR-associated protein 29) (Bap29), BCAP29, BAP29

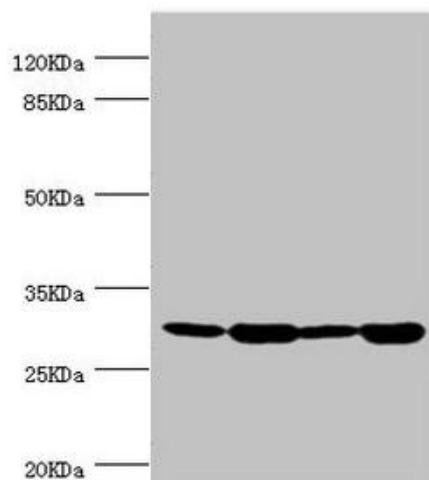
Immunogen:

Recombinant Human B-cell receptor-associated protein 29 protein (125-241AA).

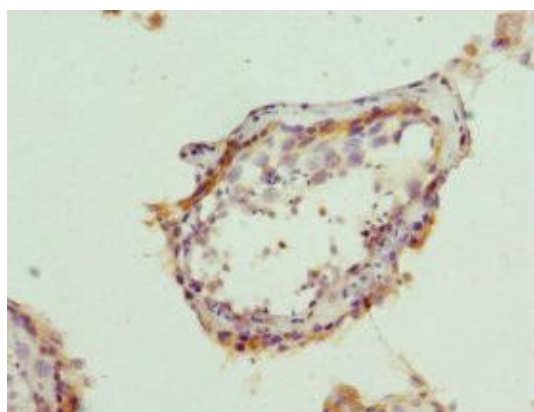
Storage:

PBS with 0.02% sodium azide, 50% glycerol, pH7.3.

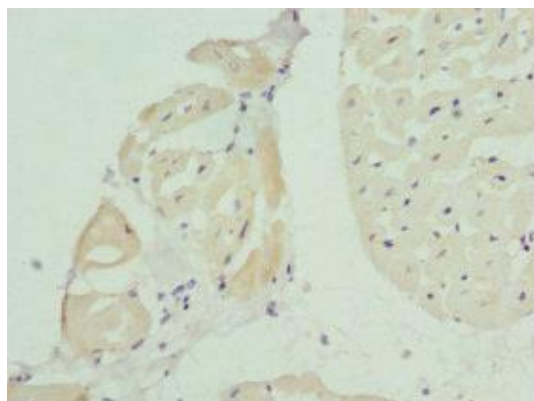
Product Images



Western blot. All lanes: BCAP29 antibody at 2.93 μ g/ml. Lane 1: Raji whole cell lysate. Lane 2: Colo320 whole cell lysate. Lane 3: Rat gonad tissue. Lane 4: THP-1 whole cell lysate. Secondary. Goat polyclonal to rabbit IgG at 1/10000 dilution. Predicted band size: 29, 41 kDa. Observed band size: 29 kDa.



Immunohistochemistry of paraffin-embedded human testis tissue using PACO44229 at dilution of 1:100.



Immunohistochemistry of paraffin-embedded human heart tissue using PACO44229 at dilution of 1:100.