

PACO44243

---

## Product Information

**Size:**

50ul

**Reactivity:**

Human

**Source:**

Rabbit

**Isotype:**

IgG

**Applications:**

ELISA, IHC

**Recommended dilutions:**

ELISA:1:2000-1:10000, IHC:1:20-1:200

**Protein Background:**

Plays a role in regulating placenta growth. May act via its PH domain that competes with other PH domain-containing proteins, thereby preventing their binding to membrane lipids.

**Gene ID:**

PHLDA2

**Uniprot**

Q53GA4

**Synonyms:**

Pleckstrin homology-like domain family A member 2 (Beckwith-Wiedemann syndrome chromosomal region 1 candidate gene C protein) (Imprinted in placenta and liver protein) (Tumor-suppressing STF cDNA 3 protein) (Tumor-suppressing subchromosomal transferable fragment candidate gene 3 protein) (p17-Beckwith-Wiedemann region 1 C) (p17-BWR1C), PHLDA2, BWR1C HLDA2 IPL TSSC3

**Immunogen:**

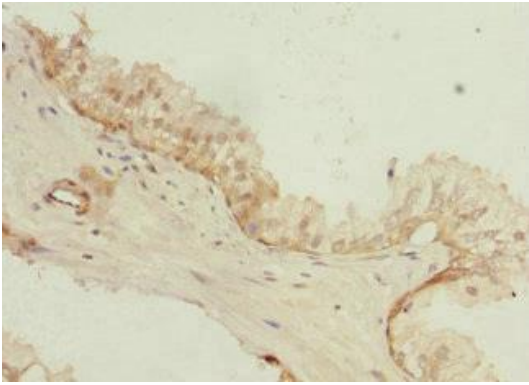
Recombinant Human Pleckstrin homology-like domain family A member 2 protein (1-152AA).

**Storage:**

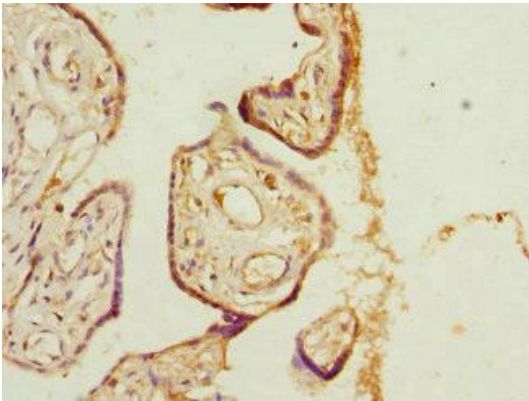
PBS with 0.02% sodium azide, 50% glycerol, pH7.3.

## Product Images

---



Immunohistochemistry of paraffin-embedded human prostate cancer using PACO44243 at dilution of 1:100.



Immunohistochemistry of paraffin-embedded human placenta tissue using PACO44243 at dilution of 1:100.