

PRUNE2 Antibody



PACO44244

Product Information

Size:

50ul

Reactivity:

Human

Source:

Rabbit

Isotype:

IgG

Applications:

ELISA, IHC

Recommended dilutions:

ELISA:1:2000-1:10000, IHC:1:20-1:200

Protein Background:

May play an important role in regulating differentiation, survival and aggressiveness of the tumor cells.

Gene ID:

PRUNE2

Uniprot

Q8WUY3

Synonyms:

Protein prune homolog 2 (BNIP2 motif-containing molecule at the C-terminal region 1), PRUNE2, BMCC1 BNIPXL C9orf65 KIAA0367

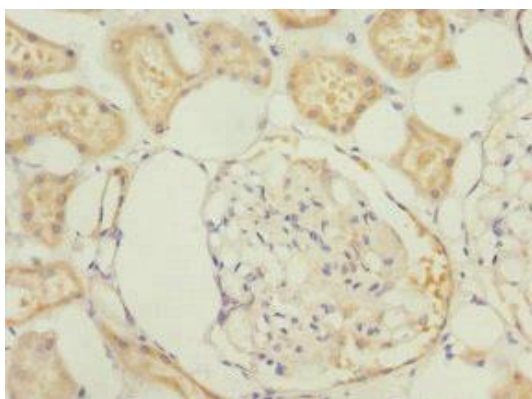
Immunogen:

Recombinant Human Protein prune homolog 2 protein (1-250AA).

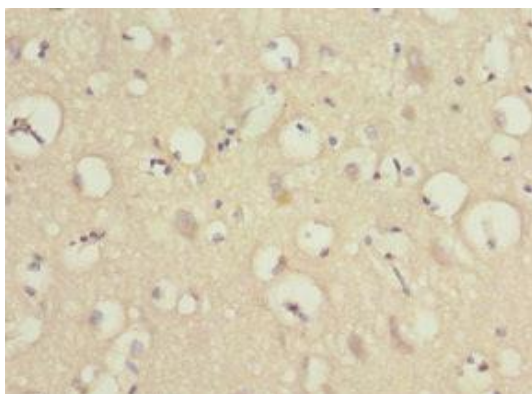
Storage:

PBS with 0.02% sodium azide, 50% glycerol, pH7.3.

Product Images



Immunohistochemistry of paraffin-embedded human kidney tissue using PACO44244 at dilution of 1:100.



Immunohistochemistry of paraffin-embedded human brain tissue using PACO44244 at dilution of 1:100.