

ZC3HC1 Antibody



PACO44249

Product Information

Size:

50ul

Reactivity:

Human

Source:

Rabbit

Isotype:

IgG

Applications:

ELISA, WB, IHC

Recommended dilutions:

ELISA:1:2000-1:10000, WB:1:1000-1:5000,
IHC:1:20-1:200

Protein Background:

Essential component of an SCF-type E3 ligase complex, SCF(NIPA), a complex that controls mitotic entry by mediating ubiquitination and subsequent degradation of cyclin B1 (CCNB1). Its cell-cycle-dependent phosphorylation regulates the assembly of the SCF(NIPA) complex, restricting CCNB1 ubiquitination activity to interphase. Its inactivation results in nuclear accumulation of CCNB1 in interphase and premature mitotic entry. May have an antiapoptotic role in NPM-ALK-mediated signaling events.

Gene ID:

ZC3HC1

Uniprot

Q86WB0

Synonyms:

Nuclear-interacting partner of ALK (Nuclear-interacting partner of anaplastic lymphoma kinase) (hNIPA) (Zinc finger C3HC-type protein 1), ZC3HC1, NIPA

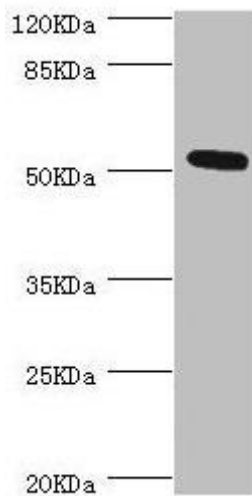
Immunogen:

Recombinant Human Nuclear-interacting partner of ALK protein (1-260AA).

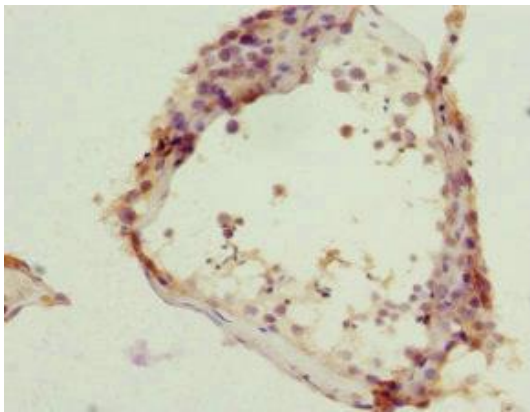
Storage:

PBS with 0.02% sodium azide, 50% glycerol, pH7.3.

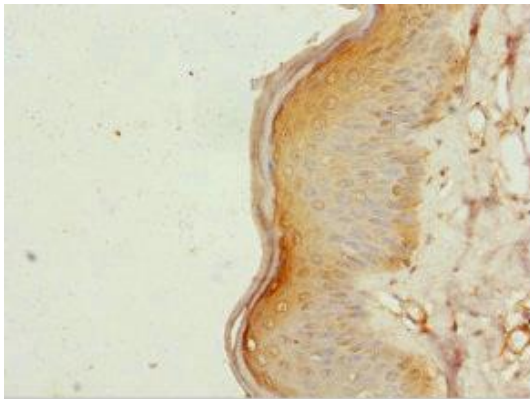
Product Images



Western blot. All lanes: ZC3HC1 antibody at 0.98 μ g/ml + HeLa whole cell lysate. Secondary. Goat polyclonal to rabbit IgG at 1/10000 dilution. Predicted band size: 56, 54, 48 kDa. Observed band size: 54 kDa.



Immunohistochemistry of paraffin-embedded human testis tissue using PACO44249 at dilution of 1:100.



Immunohistochemistry of paraffin-embedded human skin tissue using PACO44249 at dilution of 1:100.