

# MGAT1 Antibody



PACO44266

---

## Product Information

**Size:**

50ul

**Reactivity:**

Human

**Source:**

Rabbit

**Isotype:**

IgG

**Applications:**

ELISA, WB, IHC

**Recommended dilutions:**

ELISA:1:2000-1:10000, WB:1:1000-1:5000,  
IHC:1:20-1:200

**Protein Background:**

Initiates complex N-linked carbohydrate formation. Essential for the conversion of high-mannose to hybrid and complex N-glycans.

**Gene ID:**

MGAT1

**Uniprot**

P26572

**Synonyms:**

Alpha-1,3-mannosyl-glycoprotein 2-beta-N-acetylglucosaminyltransferase (EC 2.4.1.101) (N-glycosyl-oligosaccharide-glycoprotein N-acetylglucosaminyltransferase I) (GNT-I) (GlcNAc-T I), MGAT1, GGNT1 GLCT1 GLYT1 MGAT

**Immunogen:**

Recombinant Human Alpha-1,3-mannosyl-glycoprotein 2-beta-N-acetylglucosaminyltransferase protein (156-445AA).

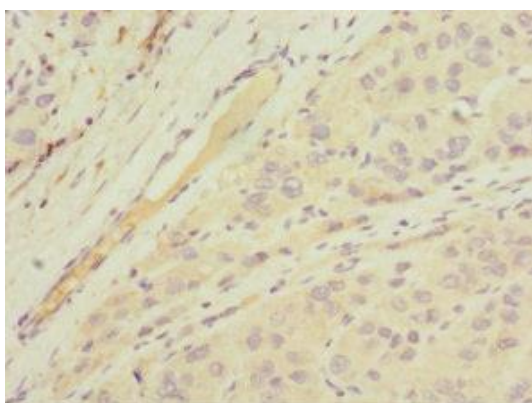
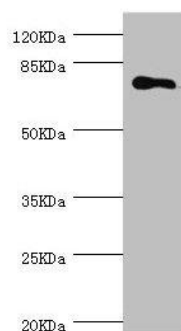
**Storage:**

PBS with 0.02% sodium azide, 50% glycerol, pH7.3.

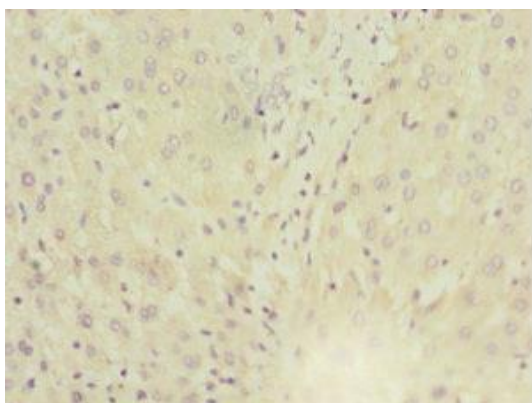
## Product Images

---

Western blot. All lanes: MGAT1 antibody at 1.18 $\mu$ g/ml + 293T whole cell lysate. Secondary. Goat polyclonal to rabbit IgG at 1/10000 dilution. Predicted band size: 75 kDa. Observed band size: 75 kDa.



Immunohistochemistry of paraffin-embedded human liver cancer using PACO44266 at dilution of 1:100.



Immunohistochemistry of paraffin-embedded human liver tissue using PACO44266 at dilution of 1:100.