
Product Information

Size:

50ul

Reactivity:

Human

Source:

Rabbit

Isotype:

IgG

Applications:

ELISA, IHC

Recommended dilutions:

ELISA:1:2000-1:10000, IHC:1:20-1:200

Protein Background:

Facilitates protein transport into the nucleus. Interacts with the nucleoporin p62 and with Ran. Acts at a relatively late stage of nuclear protein import, subsequent to the initial docking of nuclear import ligand at the nuclear envelope. Could be part of a multicomponent system of cytosolic factors that assemble at the pore complex during nuclear import.

Gene ID:

NUTF2

Uniprot

P61970

Synonyms:

Nuclear transport factor 2 (NTF-2) (Placental protein 15) (PP15), NUTF2, NTF2

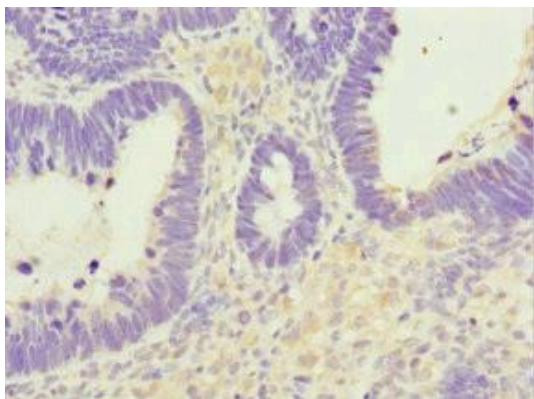
Immunogen:

Recombinant Human Nuclear transport factor 2 protein (1-127AA).

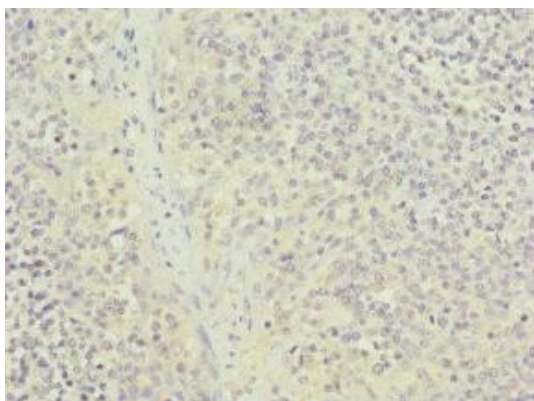
Storage:

PBS with 0.02% sodium azide, 50% glycerol, pH7.3.

Product Images



Immunohistochemistry of paraffin-embedded human ovarian cancer using PACO44272 at dilution of 1:100.



Immunohistochemistry of paraffin-embedded human tonsil tissue using PACO44272 at dilution of 1:100.