

RBP2 Antibody



PACO44273

Product Information

Size:

50ul

Reactivity:

Human

Source:

Rabbit

Isotype:

IgG

Applications:

ELISA, WB, IHC

Recommended dilutions:

ELISA:1:2000-1:10000, WB:1:1000-1:5000,
IHC:1:20-1:200

Protein Background:

Intracellular transport of retinol.

Gene ID:

RBP2

Uniprot

P50120

Synonyms:

Retinol-binding protein 2 (Cellular retinol-binding protein II) (CRBP-II), RBP2, CRBP2

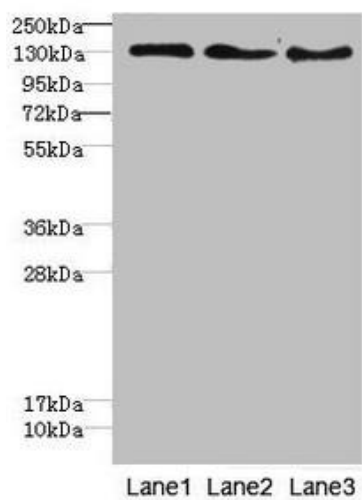
Immunogen:

Recombinant Human Retinol-binding protein 2 protein (1-134AA).

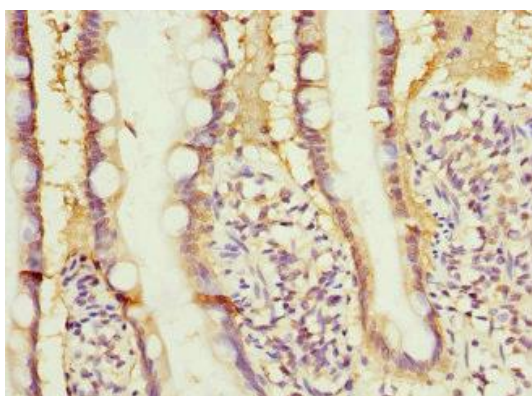
Storage:

PBS with 0.02% sodium azide, 50% glycerol, pH7.3.

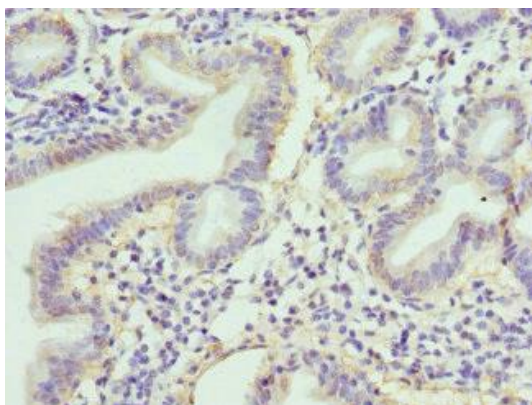
Product Images



Western blot. All lanes: RBP2 antibody at 1.76 μ g/ml. Lane 1: HeLa whole cell lysate. Lane 2: HepG2 whole cell lysate. Lane 3: Jurkat whole cell lysate. Secondary: Goat polyclonal to rabbit IgG at 1/10000 dilution. Predicted band size: 192 kDa. Observed band size: 192 kDa.



Immunohistochemistry of paraffin-embedded human small intestine tissue using PACO44273 at dilution of 1:100.



Immunohistochemistry of paraffin-embedded human duodenal tissue using PACO44273 at dilution of 1:100.