

# INTS11 Antibody



PACO44281

---

## Product Information

**Size:**

50ul

**Reactivity:**

Human

**Source:**

Rabbit

**Isotype:**

IgG

**Applications:**

ELISA, WB, IHC

**Recommended dilutions:**

ELISA:1:2000-1:10000, WB:1:1000-1:5000,  
IHC:1:20-1:200

**Protein Background:**

Catalytic component of the Integrator complex, a complex involved in the small nuclear RNAs (snRNA) U1 and U2 transcription and in their 3'-box-dependent processing. The Integrator complex is associated with the C-terminal domain (CTD) of RNA polymerase II largest subunit (POLR2A) and is recruited to the U1 and U2 snRNAs genes. Mediates the snRNAs 3' cleavage.

**Gene ID:**

INTS11

**Uniprot**

Q5TA45

**Synonyms:**

Integrator complex subunit 11 (Int11) (EC 3.1.27. -) (Cleavage and polyadenylation-specific factor 3-like protein) (CPSF3-like protein) (Protein related to CPSF subunits of 68 kDa) (RC-68), INTS11, CPSF3L RC68

**Immunogen:**

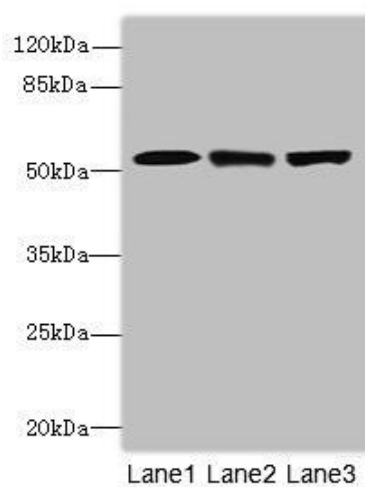
Recombinant Human Integrator complex subunit 11 protein (331-600AA).

**Storage:**

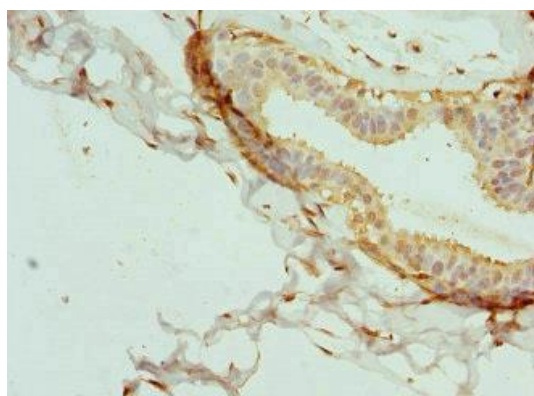
PBS with 0.02% sodium azide, 50% glycerol, pH7.3.

## Product Images

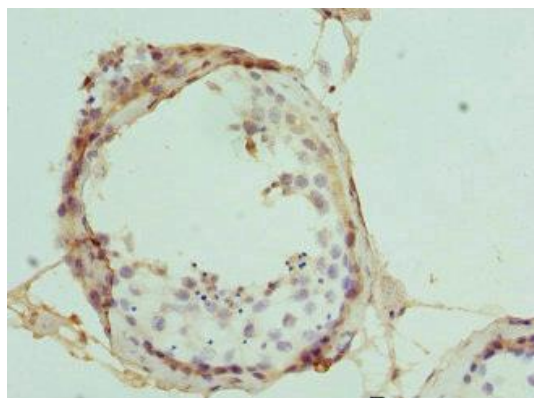
---



Western blot. All lanes: CPSF3Lantibody at 4.2 $\mu$ g/ml. Lane 1: Colo320 whole cell lysate. Lane 2: HeLa whole cell lysate. Lane 3: MCF-7 whole cell lysate. Secondary. Goat polyclonal to rabbit IgG at 1/10000 dilution. Predicted band size: 68, 57, 66, 65, 69 kDa. Observed band size: 68 kDa.



Immunohistochemistry of paraffin-embedded human breast cancer using PACO44281 at dilution of 1:100.



Immunohistochemistry of paraffin-embedded human testis tissue using PACO44281 at dilution of 1:100.