

PACO44282

---

## Product Information

**Size:**

50ul

**Reactivity:**

Human

**Source:**

Rabbit

**Isotype:**

IgG

**Applications:**

ELISA, WB, IHC

**Recommended dilutions:**

ELISA:1:2000-1:10000, WB:1:1000-1:5000,  
IHC:1:20-1:200

**Protein Background:**

Transcription factor that activates the LYN and BLK promoters. Appears to be required for the T-cell-receptor-mediated trans activation of HIV-2 gene expression. Binds specifically to two purine-rich motifs in the HIV-2 enhancer.

**Gene ID:**

ELF1

**Uniprot**

P32519

**Synonyms:**

ETS-related transcription factor Elf-1 (E74-like factor 1), ELF1

**Immunogen:**

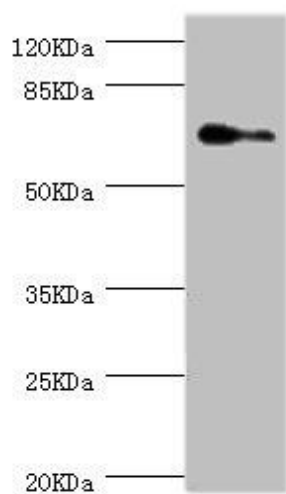
Recombinant Human ETS-related transcription factor Elf-1 protein (1-210AA).

**Storage:**

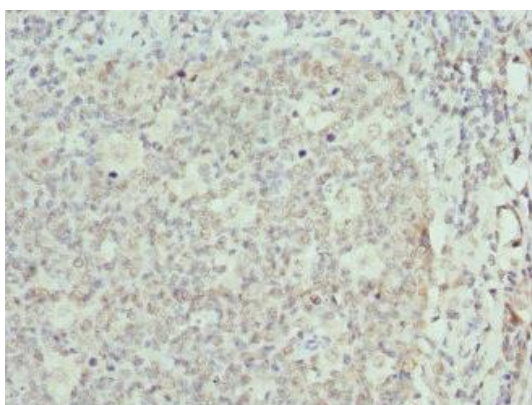
PBS with 0.02% sodium azide, 50% glycerol, pH7.3.

## Product Images

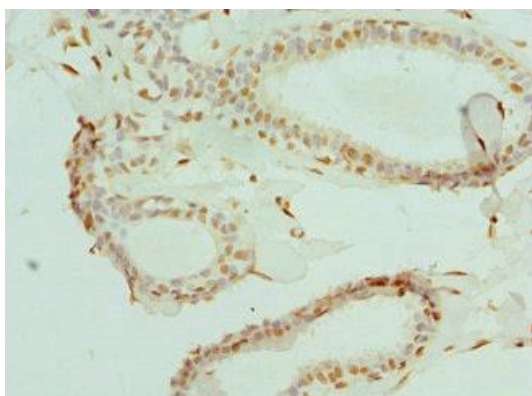
---



Western blot. All lanes: ELF1 antibody at 1.88 $\mu$ g/ml + Hela whole cell lysate. Secondary. Goat polyclonal to rabbit IgG at 1/10000 dilution. Predicted band size: 68, 65 kDa. Observed band size: 68 kDa.



Immunohistochemistry of paraffin-embedded human tonsil tissue using PACO44282 at dilution of 1:100.



Immunohistochemistry of paraffin-embedded human breast cancer using PACO44282 at dilution of 1:100.