

KLK10 Antibody



PACO44295

Product Information

Size:

50ul

Reactivity:

Human

Source:

Rabbit

Isotype:

IgG

Applications:

ELISA, WB, IHC

Recommended dilutions:

ELISA:1:2000-1:10000, WB:1:1000-1:5000,
IHC:1:20-1:200

Protein Background:

Has a tumor-suppressor role for NES1 in breast and prostate cancer.

Gene ID:

KLK10

Uniprot

O43240

Synonyms:

Kallikrein-10 (EC 3.4.21. -) (Normal epithelial cell-specific 1) (Protease serine-like 1),
KLK10, NES1 PRSSL1

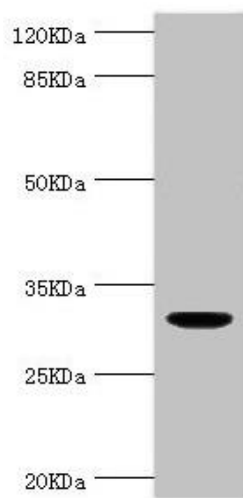
Immunogen:

Recombinant Human Kallikrein-10 protein (35-276AA).

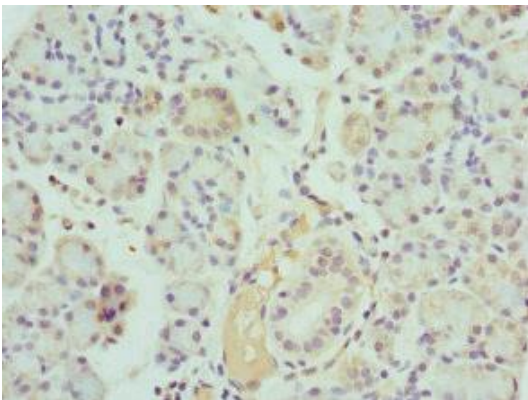
Storage:

PBS with 0.02% sodium azide, 50% glycerol, pH7.3.

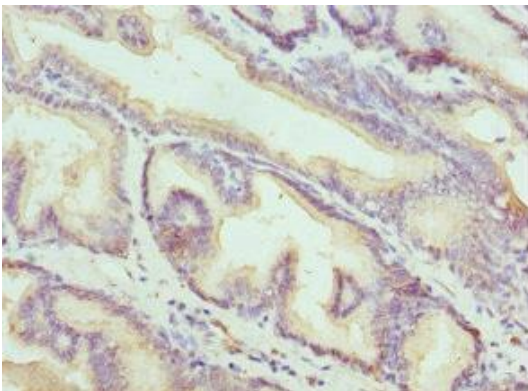
Product Images



Western blot. All lanes: KLK10 antibody at 1.48 μ g/ml + THP-1 whole cell lysate. Secondary. Goat polyclonal to rabbit IgG at 1/10000 dilution. Predicted band size: 30 kDa. Observed band size: 30 kDa.



Immunohistochemistry of paraffin-embedded human pancreatic tissue using PACO44295 at dilution of 1:100.



Immunohistochemistry of paraffin-embedded human prostate cancer using PACO44295 at dilution of 1:100.