

TRAPPC10 Antibody



PACO44314

Product Information

Size:

50ul

Reactivity:

Human

Source:

Rabbit

Isotype:

IgG

Applications:

ELISA, IHC

Recommended dilutions:

ELISA:1:2000-1:10000, IHC:1:20-1:200

Protein Background:

May play a role in vesicular transport from endoplasmic reticulum to Golgi.

Gene ID:

TRAPPC10

Uniprot

P48553

Synonyms:

Trafficking protein particle complex subunit 10 (Epilepsy holoprosencephaly candidate 1 protein) (EHOC-1) (Protein GT334) (Trafficking protein particle complex subunit TMEM1) (Transport protein particle subunit TMEM1) (TRAPP subunit TMEM1), TRAPPC10, EHOC1 TMEM1

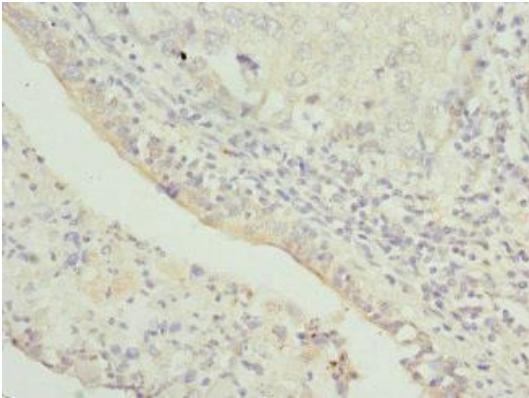
Immunogen:

Recombinant Human Trafficking protein particle complex subunit 10 protein (1-260AA).

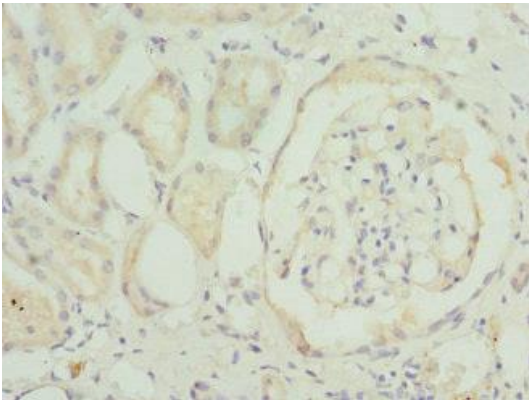
Storage:

PBS with 0.02% sodium azide, 50% glycerol, pH7.3.

Product Images



Immunohistochemistry of paraffin-embedded human lung cancer using PACO44314 at dilution of 1:100.



Immunohistochemistry of paraffin-embedded human kidney tissue using PACO44314 at dilution of 1:100.