

PACO44345

Product Information

Size:

50ul

Reactivity:

Human

Source:

Rabbit

Isotype:

IgG

Applications:

ELISA, WB

Recommended dilutions:

ELISA:1:2000-1:10000, WB:1:1000-1:5000

Protein Background:

Component of the endoplasmic reticulum quality control (ERQC) system also called ER-associated degradation (ERAD) involved in ubiquitin-dependent degradation of misfolded endoplasmic reticulum proteins. Could enhance presenilin-mediated beta-amyloid protein 40 generation. Binds to ubiquilins and this interaction is required for efficient degradation of CD3D via the ERAD pathway.

Gene ID:

HERPUD1

Uniprot

Q15011

Synonyms:

Homocysteine-responsive endoplasmic reticulum-resident ubiquitin-like domain member 1 protein (Methyl methanesulfonate (MMF)-inducible fragment protein 1), HERPUD1, HERP KIAA0025 MIF1

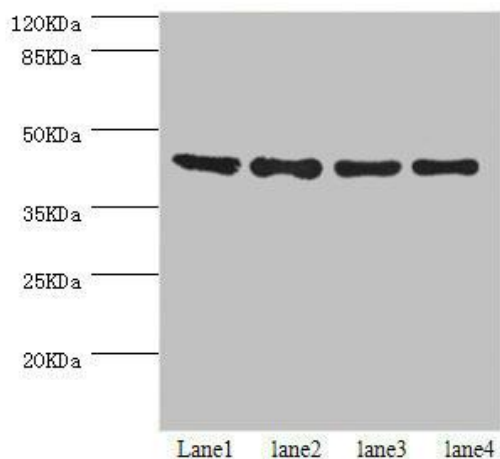
Immunogen:

Recombinant Human Homocysteine-responsive endoplasmic reticulum-resident ubiquitin-like domain member 1 protein (1-240AA).

Storage:

PBS with 0.02% sodium azide, 50% glycerol, pH7.3.

Product Images



Western blot. All lanes: HERPUD1 antibody at 2.07 μ g/ml. Lane 1: HepG2 whole cell lysate. Lane 2: Hela whole cell lysate. Lane 3: PC-3 whole cell lysate. Lane 4: 293T whole cell lysate. Secondary. Goat polyclonal to rabbit IgG at 1/10000 dilution. Predicted band size: 44, 27, 41 kDa. Observed band size: 44 kDa.