

# SCGB2A2 Antibody



PACO44361

---

## Product Information

**Size:**

50ul

**Reactivity:**

Human

**Source:**

Rabbit

**Isotype:**

IgG

**Applications:**

ELISA, IHC

**Recommended dilutions:**

ELISA:1:2000-1:10000, IHC:1:20-1:200

**Protein Background:****Gene ID:**

SCGB2A2

**Uniprot**

Q13296

**Synonyms:**

Mammaglobin-A (Mammaglobin-1) (Secretoglobin family 2A member 2), SCGB2A2, MGB1 UGB2

**Immunogen:**

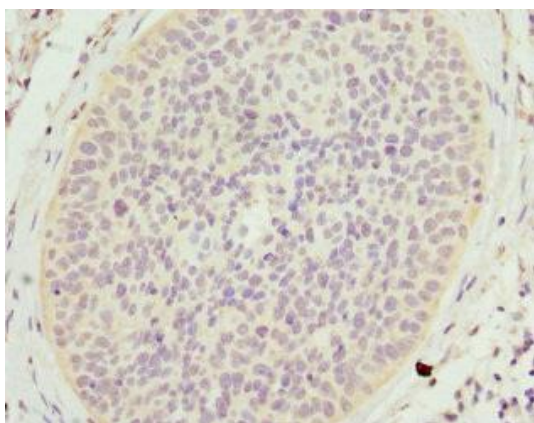
Recombinant Human Mammaglobin-A protein (1-93AA).

**Storage:**

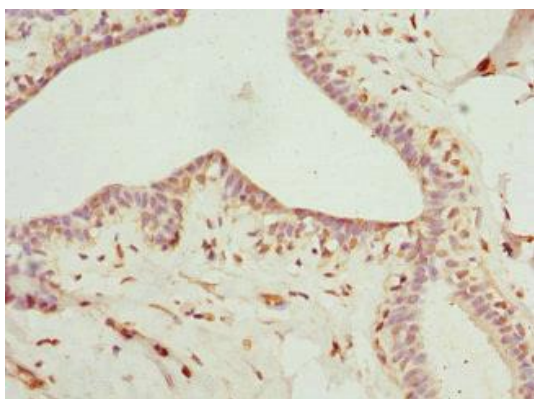
PBS with 0.02% sodium azide, 50% glycerol, pH7.3.

## Product Images

---



Immunohistochemistry of paraffin-embedded human cervical cancer using PACO44361 at dilution of 1:100.



Immunohistochemistry of paraffin-embedded human breast cancer using PACO44361 at dilution of 1:100.