

---

## Product Information

**Size:**

50ul

**Reactivity:**

Human

**Source:**

Rabbit

**Isotype:**

IgG

**Applications:**

ELISA, WB, IHC

**Recommended dilutions:**

ELISA:1:2000-1:10000, WB:1:1000-1:5000,  
IHC:1:20-1:200

**Protein Background:**

Acts as a guanine-nucleotide exchange factor (GEF). Promotes guanine-nucleotide exchange on ARF1, ARF3 and ARF6. Promotes the activation of ARF factors through replacement of GDP with GTP. The cell membrane form, in association with ARL4 proteins, recruits ARF6 to the plasma membrane. Involved in neurite growth.

**Gene ID:**

CYTH2

**Uniprot**

Q99418

**Synonyms:**

Cytohesin-2 (ARF exchange factor) (ARF nucleotide-binding site opener) (Protein ARNO) (PH, SEC7 and coiled-coil domain-containing protein 2), CYTH2, ARNO PSCD2 PSCD2L

**Immunogen:**

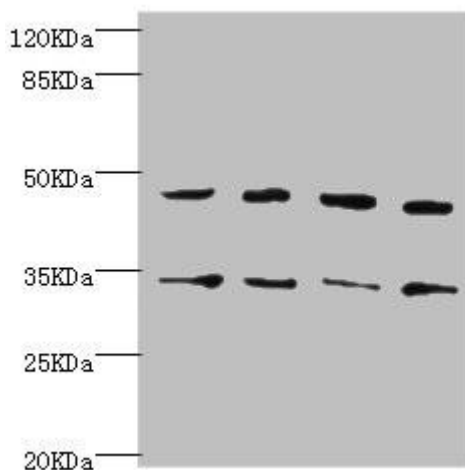
Recombinant Human Cytohesin-2 protein (150-350AA).

**Storage:**

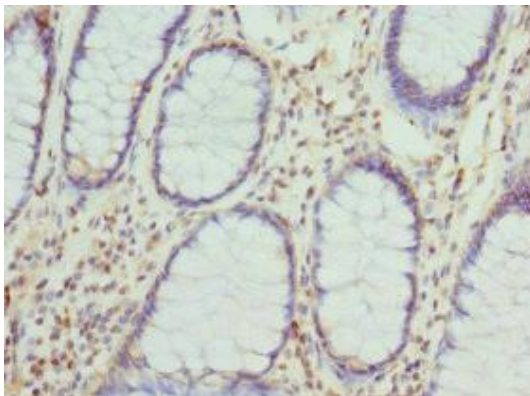
PBS with 0.02% sodium azide, 50% glycerol, pH7.3.

## Product Images

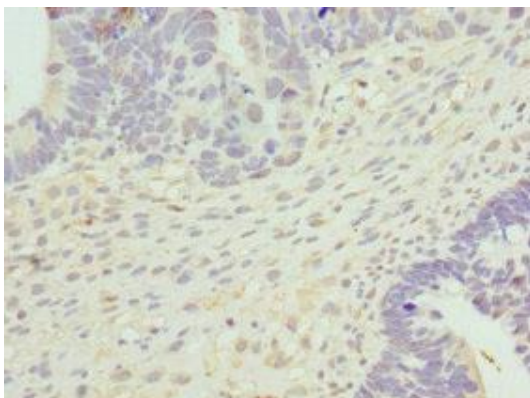
---



Western blot. All lanes: CYTH2 antibody at 5.58 $\mu$ g/ml. Lane 1: U251 whole cell lysate. Lane 2: HepG2 whole cell lysate. Lane 3: MCF-7 whole cell lysate. Lane 4: A549 whole cell lysate. Secondary: Goat polyclonal to rabbit IgG at 1/10000 dilution. Predicted band size: 47 kDa. Observed band size: 47, 35 kDa.



Immunohistochemistry of paraffin-embedded human colon cancer using PACO44371 at dilution of 1:100.



Immunohistochemistry of paraffin-embedded human ovarian cancer using PACO44371 at dilution of 1:100.