
Product Information

Size:

50ul

Reactivity:

Human

Source:

Rabbit

Isotype:

IgG

Applications:

ELISA, WB, IHC

Recommended dilutions:

ELISA:1:2000-1:10000, WB:1:1000-1:5000,
IHC:1:20-1:200

Protein Background:

Acts as a guanine-nucleotide exchange factor (GEF). Promotes guanine-nucleotide exchange on ARF1, ARF3 and ARF6. Promotes the activation of ARF factors through replacement of GDP with GTP. The cell membrane form, in association with ARL4 proteins, recruits ARF6 to the plasma membrane. Involved in neurite growth.

Gene ID:

CYTH2

Uniprot

Q99418

Synonyms:

Cytohesin-2 (ARF exchange factor) (ARF nucleotide-binding site opener) (Protein ARNO) (PH, SEC7 and coiled-coil domain-containing protein 2), CYTH2, ARNO PSCD2 PSCD2L

Immunogen:

Recombinant Human Cytohesin-2 protein (150-350AA).

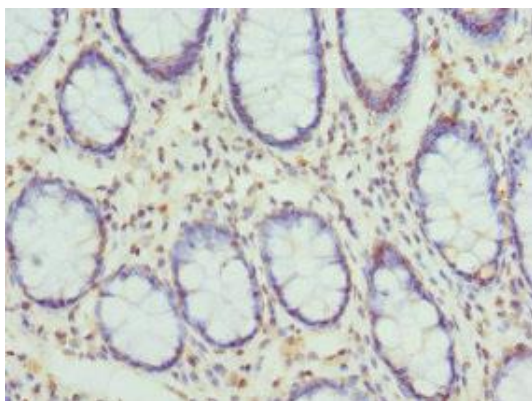
Storage:

PBS with 0.02% sodium azide, 50% glycerol, pH7.3.

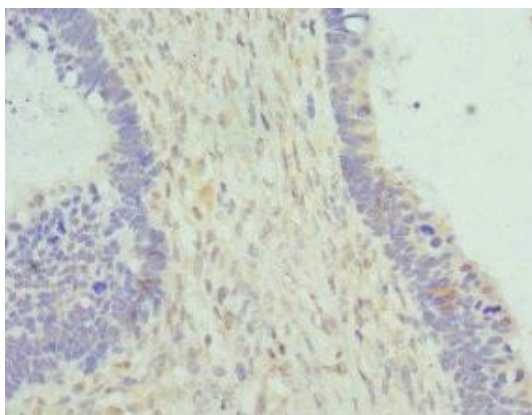
Product Images



Western blot. All lanes: CYTH2 antibody at 5.1µg/ml + MCF-7 whole cell lysate. Secondary. Goat polyclonal to rabbit IgG at 1/10000 dilution. Predicted band size: 47 kDa. Observed band size: 47 kDa.



Immunohistochemistry of paraffin-embedded human colon cancer using PACO44372 at dilution of 1:100.



Immunohistochemistry of paraffin-embedded human ovarian cancer using PACO44372 at dilution of 1:100.