

KCNH1 Antibody



PACO44383

Product Information

Size:

50ul

Reactivity:

Human

Source:

Rabbit

Isotype:

IgG

Applications:

ELISA, IHC

Recommended dilutions:

ELISA:1:2000-1:10000, IHC:1:20-1:200

Protein Background:

Pore-forming (alpha) subunit of a voltage-gated delayed rectifier potassium channel. Channel properties may be modulated by subunit assembly, but not by cyclic nucleotides. Mediates IK(NI) current in myoblasts. Involved in the regulation of cell proliferation and differentiation, in particular adipogenic and osteogenic differentiation in bone marrow-derived mesenchymal stem cells (MSCs).

Gene ID:

KCNH1

Uniprot

O95259

Synonyms:

Potassium voltage-gated channel subfamily H member 1 (Ether-a-go-go potassium channel 1) (EAG channel 1) (h-eag) (hEAG1) (Voltage-gated potassium channel subunit Kv10.1), KCNH1, EAG EAG1

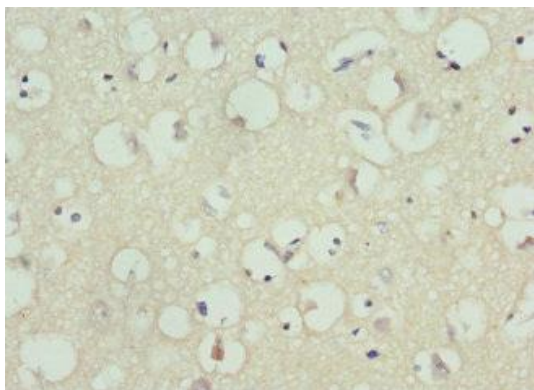
Immunogen:

Recombinant Human Potassium voltage-gated channel subfamily H member 1 protein (840-989AA).

Storage:

PBS with 0.02% sodium azide, 50% glycerol, pH7.3.

Product Images



Immunohistochemistry of paraffin-embedded human brain tissue using PACO44383 at dilution of 1:100.