

PACO44387

Product Information

Size:

50ul

Reactivity:

Human

Source:

Rabbit

Isotype:

IgG

Applications:

ELISA, IHC

Recommended dilutions:

ELISA:1:2000-1:10000, IHC:1:20-1:200

Protein Background:

Motor for anterograde transport of mitochondria. Has a microtubule plus end-directed motility. Isoform 2 is required for induction of neuronal apoptosis.

Gene ID:

KIF1B

Uniprot

O60333

Synonyms:

Kinesin-like protein KIF1B (Klp), KIF1B, KIAA0591 KIAA1448

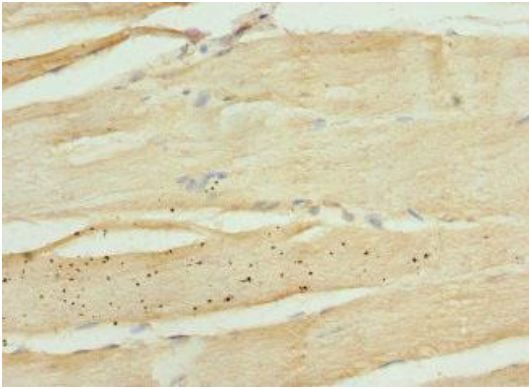
Immunogen:

Recombinant Human Kinesin-like protein KIF1B protein (1547-1816AA).

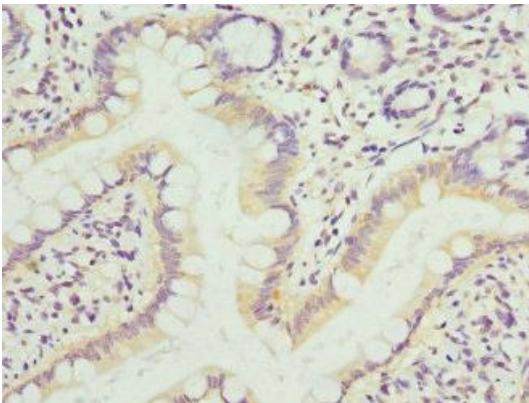
Storage:

PBS with 0.02% sodium azide, 50% glycerol, pH7.3.

Product Images



Immunohistochemistry of paraffin-embedded human skeletal muscle tissue using PACO44387 at dilution of 1:100.



Immunohistochemistry of paraffin-embedded human small intestine tissue using PACO44387 at dilution of 1:100.