

PACO44430

---

## Product Information

**Size:**

50ul

**Reactivity:**

Human

**Source:**

Rabbit

**Isotype:**

IgG

**Applications:**

ELISA, IHC

**Recommended dilutions:**

ELISA:1:2000-1:10000, IHC:1:20-1:200

**Protein Background:**

Stimulates muscle contractions of specific regions of the gastrointestinal tract. In humans, NmU stimulates contractions of the ileum and urinary bladder.

**Gene ID:**

NMU

**Uniprot**

P48645

**Synonyms:**

Neuromedin-U [Cleaved into: Neuromedin-U-25 (NmU-25)], NMU

**Immunogen:**

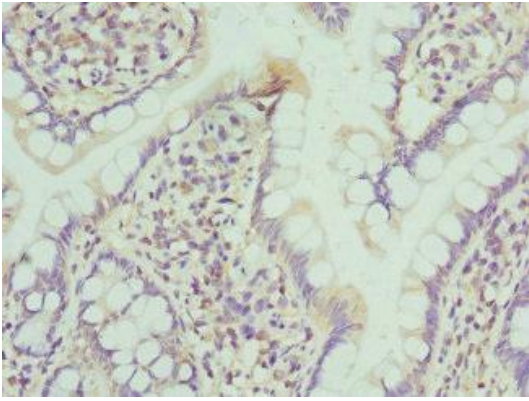
Recombinant Human Neuromedin-U protein (35-174AA).

**Storage:**

PBS with 0.02% sodium azide, 50% glycerol, pH7.3.

## Product Images

---



Immunohistochemistry of paraffin-embedded human small intestine tissue using PACO44430 at dilution of 1:100.