

PACO44435

Product Information

Size:

50ul

Reactivity:

Human

Source:

Rabbit

Isotype:

IgG

Applications:

ELISA, IHC

Recommended dilutions:

ELISA:1:2000-1:10000, IHC:1:20-1:200

Protein Background:

Regulatory subunit of the calcium-regulated non-lysosomal thiol-protease which catalyzes limited proteolysis of substrates involved in cytoskeletal remodeling and signal transduction.

Gene ID:

CAPNS1

Uniprot

P04632

Synonyms:

Calpain small subunit 1 (CSS1) (Calcium-activated neutral proteinase small subunit) (CANP small subunit) (Calcium-dependent protease small subunit) (CDPS) (Calcium-dependent protease small subunit 1) (Calpain regulatory subunit), CAPNS1, CAPN4 CAPNS

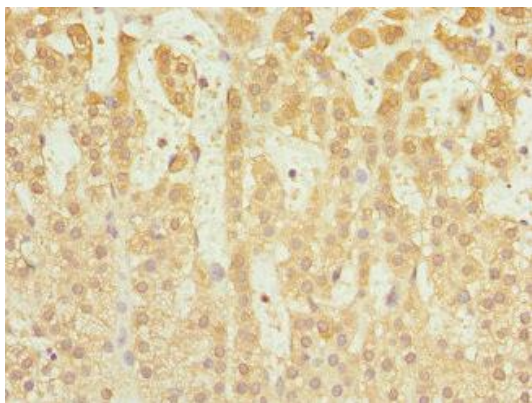
Immunogen:

Recombinant Human Calpain small subunit 1 protein (69-268AA).

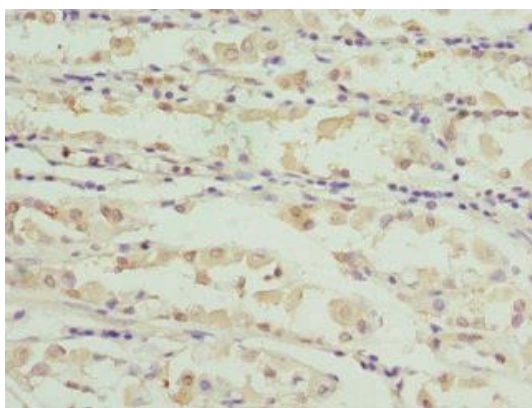
Storage:

PBS with 0.02% sodium azide, 50% glycerol, pH7.3.

Product Images



Immunohistochemistry of paraffin-embedded human adrenal gland tissue using PACO44435 at dilution of 1:100.



Immunohistochemistry of paraffin-embedded human gastric cancer using PACO44435 at dilution of 1:100.