

PACO44443

Product Information

Size:

50ul

Reactivity:

Human

Source:

Rabbit

Isotype:

IgG

Applications:

ELISA, WB, IHC

Recommended dilutions:

ELISA:1:2000-1:10000, WB:1:1000-1:5000,
IHC:1:20-1:200

Protein Background:

Catalyzes the cyclization of (S)-2,3 oxidosqualene to lanosterol, a reaction that forms the sterol nucleus. Through the production of lanosterol may regulate lens protein aggregation and increase transparency.

Gene ID:

LSS

Uniprot

P48449

Synonyms:

Lanosterol synthase (EC 5.4.99.7) (2,3-epoxysqualene--lanosterol cyclase)
(Oxidosqualene--lanosterol cyclase) (OSC) (hOSC), LSS, OSC

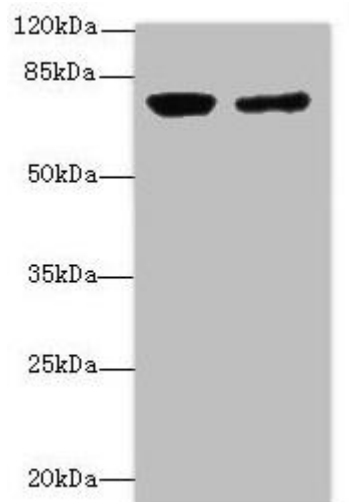
Immunogen:

Recombinant Human Lanosterol synthase protein (1-300AA).

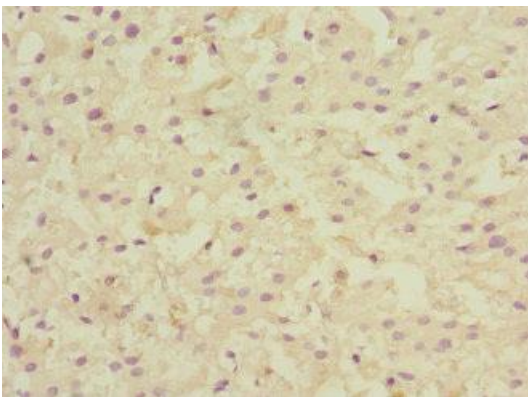
Storage:

PBS with 0.02% sodium azide, 50% glycerol, pH7.3.

Product Images



Western blot. All lanes: LSS antibody at 0.76 μ g/ml. Lane 1: PC-3 whole cell lysate. Lane 2: Hela whole cell lysate. Secondary. Goat polyclonal to rabbit IgG at 1/10000 dilution. Predicted band size: 84, 75, 83 kDa. Observed band size: 84 kDa.



Immunohistochemistry of paraffin-embedded human liver cancer using PACO44443 at dilution of 1:100.