

PACO44445

---

## Product Information

**Size:**

50ul

**Reactivity:**

Human, Mouse

**Source:**

Rabbit

**Isotype:**

IgG

**Applications:**

ELISA, WB, IHC

**Recommended dilutions:**

ELISA:1:2000-1:10000, WB:1:1000-1:5000,  
IHC:1:20-1:200

**Protein Background:**

Endopeptidase that degrades various components of the extracellular matrix, such as aggrecan and cartilage oligomeric matrix protein (comp), during development, haemostasis and pathological conditions (arthritic disease). May also play a role in neovascularization or angiogenesis. Hydrolyzes collagen type IV, laminin, nidogen, nascin-C isoform, fibronectin, and type I gelatin.

**Gene ID:**

MMP19

**Uniprot**

Q99542

**Synonyms:**

Matrix metalloproteinase-19 (MMP-19) (EC 3.4.24. -) (Matrix metalloproteinase RASI) (Matrix metalloproteinase-18) (MMP-18), MMP19, MMP18 RASI

**Immunogen:**

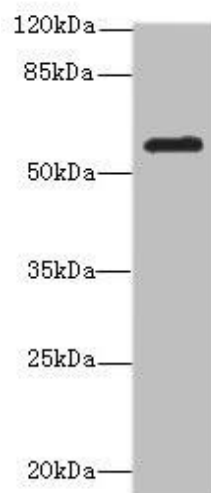
Recombinant Human Matrix metalloproteinase-19 protein (209-508AA).

**Storage:**

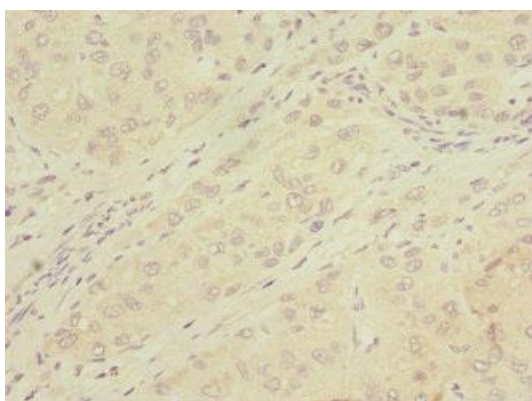
PBS with 0.02% sodium azide, 50% glycerol, pH7.3.

## Product Images

---



Western blot. All lanes: MMP19antibody at 2.58 $\mu$ g/ml + Mouse lung tissue. Secondary. Goat polyclonal to rabbit IgG at 1/10000 dilution. Predicted band size: 58, 26, 7, 34 kDa. Observed band size: 58 kDa.



Immunohistochemistry of paraffin-embedded human liver cancer using PACO44445 at dilution of 1:100.