

PACO44459

Product Information

Size:

50ul

Reactivity:

Human

Source:

Rabbit

Isotype:

IgG

Applications:

ELISA, IHC

Recommended dilutions:

ELISA:1:2000-1:10000, IHC:1:20-1:200

Protein Background:

Participates in physiological processes involving bile acid, conjugated steroids and cyclic nucleotides. Enhances the cellular extrusion of cAMP and cGMP. Stimulates the ATP-dependent uptake of a range of physiological and synthetic lipophilic anions, including the glutathione S-conjugates leukotriene C4 and dinitrophenyl S-glutathione, steroid sulfates such as dehydroepiandrosterone 3-sulfate (DHEAS) and estrone 3-sulfate, glucuronides such as estradiol 17-beta-D-glucuronide (E(2)17betaG), the monoanionic bile acid, glycocholate and taurocholate, and methotrexate. Probably functions to secrete earwax.

Gene ID:

ABCC11

Uniprot

Q96J66

Synonyms:

ATP-binding cassette sub-family C member 11 (Multidrug resistance-associated protein 8), ABCC11, MRP8

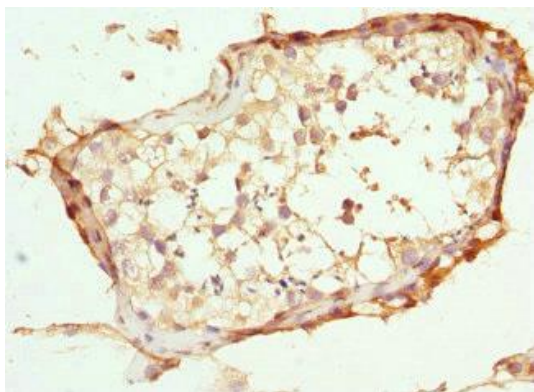
Immunogen:

Recombinant Human ATP-binding cassette sub-family C member 11 protein (1-170AA).

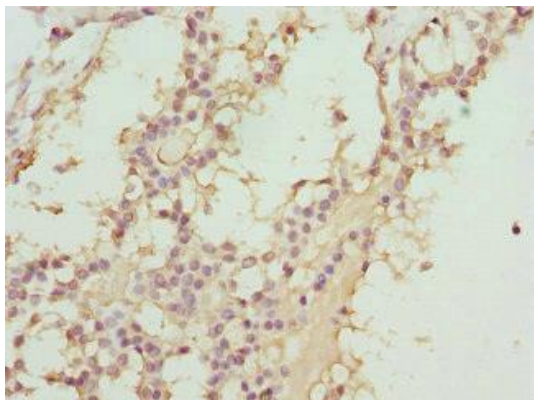
Storage:

PBS with 0.02% sodium azide, 50% glycerol, pH7.3.

Product Images



Immunohistochemistry of paraffin-embedded human testis tissue using PACO44459 at dilution of 1:100.



Immunohistochemistry of paraffin-embedded human breast cancer using PACO44459 at dilution of 1:100.