

# STAM2 Antibody



PACO44498

---

## Product Information

**Size:**

50ul

**Reactivity:**

Human

**Source:**

Rabbit

**Isotype:**

IgG

**Applications:**

ELISA, WB, IHC

**Recommended dilutions:**

ELISA:1:2000-1:10000, WB:1:1000-1:5000,  
IHC:1:20-1:200

**Protein Background:**

Involved in intracellular signal transduction mediated by cytokines and growth factors. Upon IL-2 and GM-CSL stimulation, it plays a role in signaling leading to DNA synthesis and MYC induction. May also play a role in T-cell development. Involved in down-regulation of receptor tyrosine kinase via multivesicular body (MVBs) when complexed with HGS (ESCRT-0 complex). The ESCRT-0 complex binds ubiquitin and acts as sorting machinery that recognizes ubiquitinated receptors and transfers them to further sequential lysosomal sorting/trafficking processes.

**Gene ID:**

STAM2

**Uniprot**

O75886

**Synonyms:**

Signal transducing adapter molecule 2 (STAM-2) (Hrs-binding protein), STAM2, HBP

**Immunogen:**

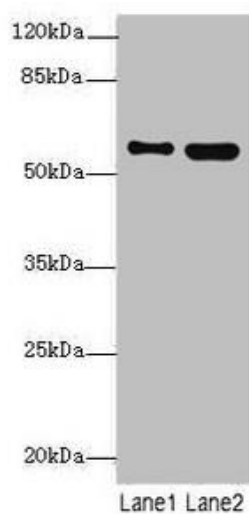
Recombinant Human Signal transducing adapter molecule 2 protein (376-525AA).

**Storage:**

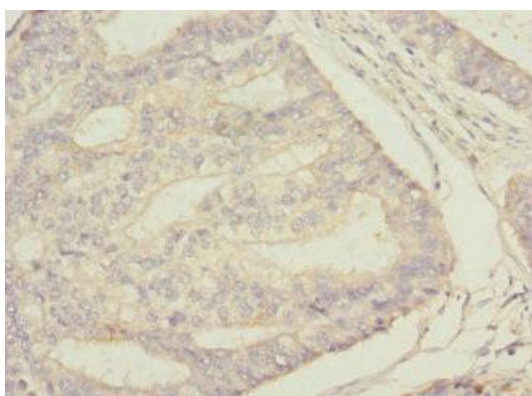
PBS with 0.02% sodium azide, 50% glycerol, pH7.3.

## Product Images

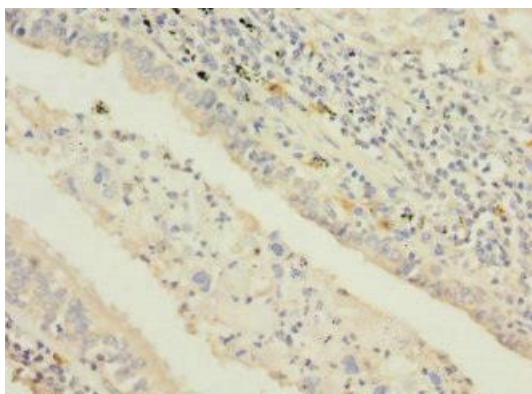
---



Western blot. All lanes: STAM2 antibody at 4.09 $\mu$ g/ml. Lane 1: 293T whole cell lysate. Lane 2: Hela whole cell lysate. Secondary. Goat polyclonal to rabbit IgG at 1/10000 dilution. Predicted band size: 59, 39 kDa. Observed band size: 59 kDa.



Immunohistochemistry of paraffin-embedded human endometrial cancer using PACO44498 at dilution of 1:100.



Immunohistochemistry of paraffin-embedded human lung cancer using PACO44498 at dilution of 1:100.