

PACO44503

---

## Product Information

**Size:**

50ul

**Reactivity:**

Human

**Source:**

Rabbit

**Isotype:**

IgG

**Applications:**

ELISA, IHC

**Recommended dilutions:**

ELISA:1:2000-1:10000, IHC:1:20-1:200

**Protein Background:**

Important modulator in the HLA class II restricted antigen presentation pathway by interaction with the HLA-DM molecule in B-cells. Modifies peptide exchange activity of HLA-DM.

**Gene ID:**

HLA-DOA

**Uniprot**

P06340

**Synonyms:**

HLA class II histocompatibility antigen, DO alpha chain (MHC DN-alpha) (MHC DZ alpha) (MHC class II antigen DOA), HLA-DOA, HLA-DNA HLA-DZA

**Immunogen:**

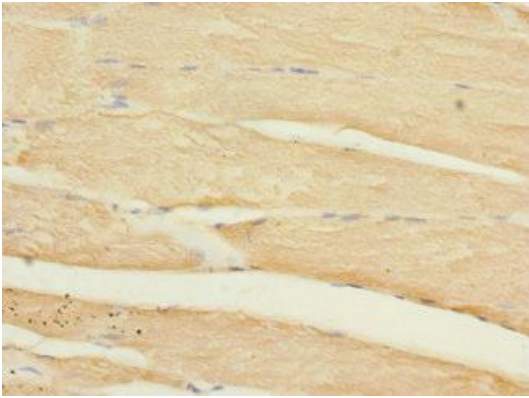
Recombinant Human HLA class II histocompatibility antigen, DO &alpha; chain protein (26-135AA).

**Storage:**

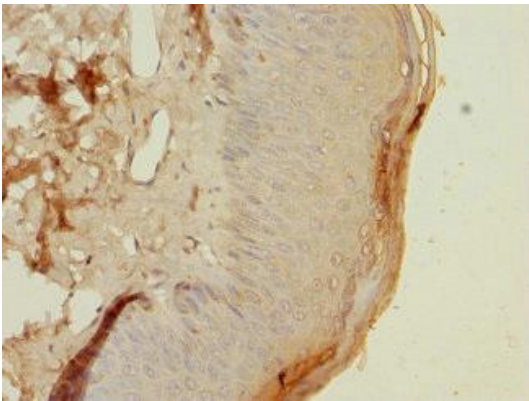
PBS with 0.02% sodium azide, 50% glycerol, pH7.3.

## Product Images

---



Immunohistochemistry of paraffin-embedded human skeletal muscle tissue using PACO44503 at dilution of 1:100.



Immunohistochemistry of paraffin-embedded human skin tissue using PACO44503 at dilution of 1:100.