

MCM10 Antibody



PACO44506

Product Information

Size:

50ul

Reactivity:

Human

Source:

Rabbit

Isotype:

IgG

Applications:

ELISA, IHC

Recommended dilutions:

ELISA:1:2000-1:10000, IHC:1:20-1:200

Protein Background:

Acts as a replication initiation factor that brings together the MCM2-7 helicase and the DNA polymerase alpha/primase complex in order to initiate DNA replication. Additionally, plays a role in preventing DNA damage during replication. Key effector of the RBBP6 and ZBTB38-mediated regulation of DNA-replication and common fragile sites stability; acts as a direct target of transcriptional repression by ZBTB38.

Gene ID:

MCM10

Uniprot

Q7L590

Synonyms:

Protein MCM10 homolog (HsMCM10), MCM10

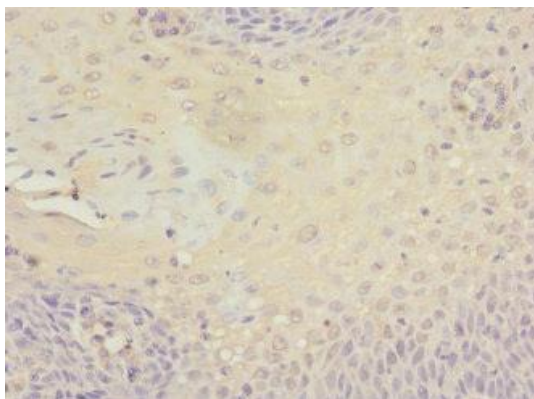
Immunogen:

Recombinant Human Protein MCM10 homolog protein (616-875AA).

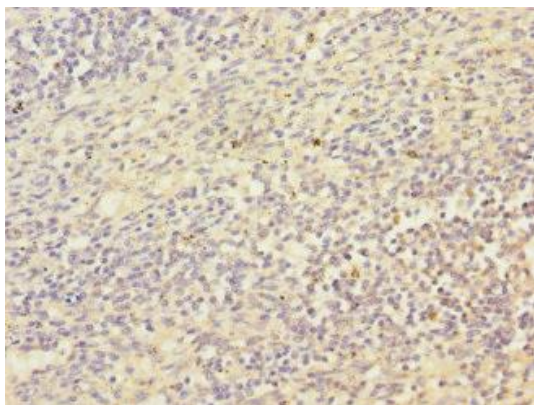
Storage:

PBS with 0.02% sodium azide, 50% glycerol, pH7.3.

Product Images



Immunohistochemistry of paraffin-embedded human tonsil tissue using PACO44506 at dilution of 1:100.



Immunohistochemistry of paraffin-embedded human spleen tissue using PACO44506 at dilution of 1:100.