

PRPS1 Antibody



PACO44516

Product Information

Size:

50ul

Reactivity:

Human

Source:

Rabbit

Isotype:

IgG

Applications:

ELISA, WB, IHC

Recommended dilutions:

ELISA:1:2000-1:10000, WB:1:1000-1:5000,
IHC:1:20-1:200

Protein Background:

Catalyzes the synthesis of phosphoribosylpyrophosphate (PRPP) that is essential for nucleotide synthesis.

Gene ID:

PRPS1

Uniprot

P60891

Synonyms:

Ribose-phosphate pyrophosphokinase 1 (EC 2.7.6.1) (PPRibP) (Phosphoribosyl pyrophosphate synthase I) (PRS-I), PRPS1

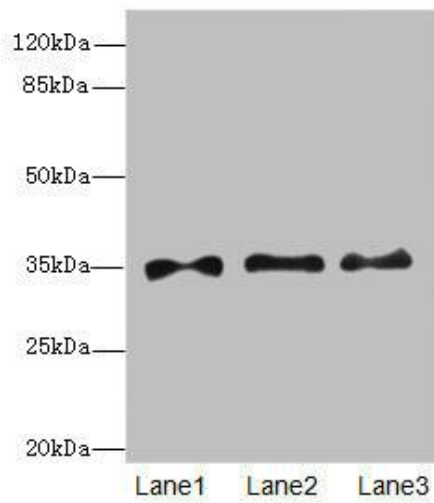
Immunogen:

Recombinant Human Ribose-phosphate pyrophosphokinase 1 protein (1-318AA).

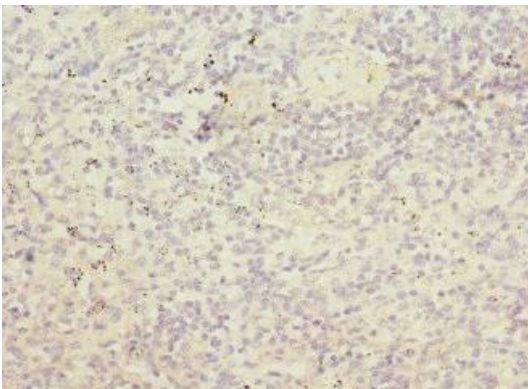
Storage:

PBS with 0.02% sodium azide, 50% glycerol, pH7.3.

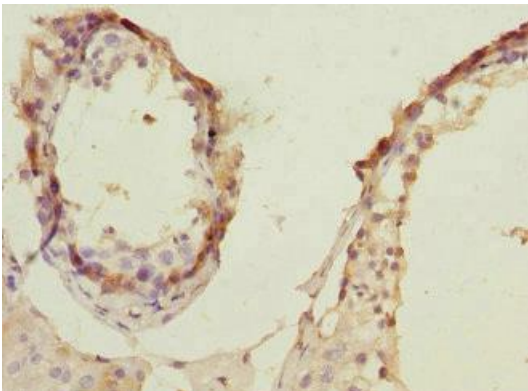
Product Images



Western blot. All lanes: PRPS1 antibody at 6.28 μ g/ml. Lane 1: HepG2 whole cell lysate. Lane 2: Jurkat whole cell lysate. Lane 3: 293T whole cell lysate. Secondary: Goat polyclonal to rabbit IgG at 1/10000 dilution. Predicted band size: 35, 28 kDa. Observed band size: 35 kDa.



Immunohistochemistry of paraffin-embedded human spleen tissue using PACO44516 at dilution of 1:100.



Immunohistochemistry of paraffin-embedded human testis tissue using PACO44516 at dilution of 1:100.