

PSMD13 Antibody



PACO44519

Product Information

Size:

50ul

Reactivity:

Human, Mouse

Source:

Rabbit

Isotype:

IgG

Applications:

ELISA, WB, IHC

Recommended dilutions:

ELISA:1:2000-1:10000, WB:1:1000-1:5000,
IHC:1:20-1:200

Protein Background:

Acts as a regulatory subunit of the 26S proteasome which is involved in the ATP-dependent degradation of ubiquitinated proteins.

Gene ID:

PSMD13

Uniprot

Q9UNM6

Synonyms:

26S proteasome non-ATPase regulatory subunit 13 (26S proteasome regulatory subunit RPN9) (26S proteasome regulatory subunit S11) (26S proteasome regulatory subunit p40.5), PSMD13

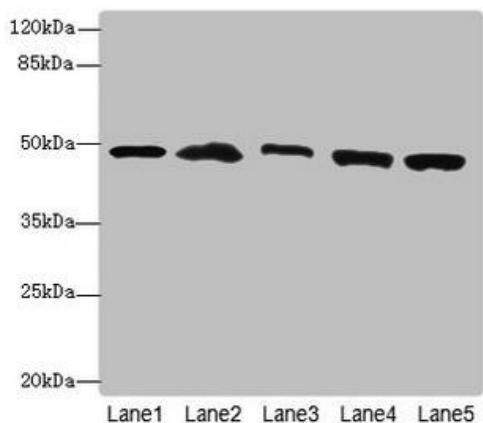
Immunogen:

Recombinant Human 26S proteasome non-ATPase regulatory subunit 13 protein (1-250AA).

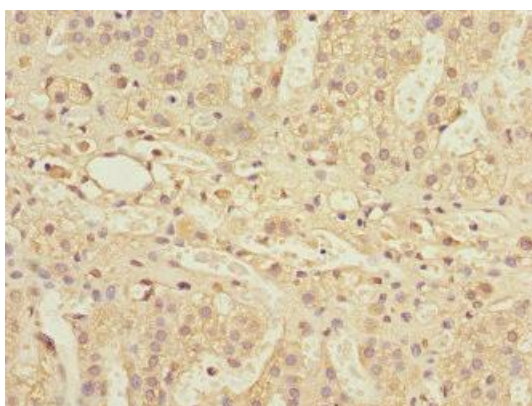
Storage:

PBS with 0.02% sodium azide, 50% glycerol, pH7.3.

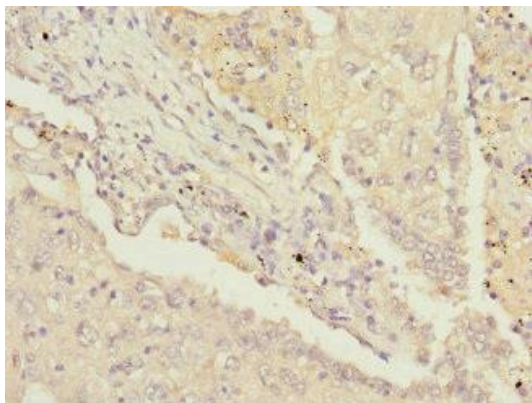
Product Images



Western blot. All lanes: PSMD13 antibody at 3.42 μ g/ml. Lane 1: Mouse lung tissue. Lane 2: 293T whole cell lysate. Lane 3: HeLa whole cell lysate. Lane 4: HepG2 whole cell lysate. Lane 5: Jurkat whole cell lysate. Secondary: Goat polyclonal to rabbit IgG at 1/10000 dilution. Predicted band size: 43 kDa. Observed band size: 43 kDa.



Immunohistochemistry of paraffin-embedded human adrenal gland tissue using PACO44519 at dilution of 1:100.



Immunohistochemistry of paraffin-embedded human lung cancer using PACO44519 at dilution of 1:100.