

PACO44523

Product Information

Size:

50ul

Reactivity:

Human

Source:

Rabbit

Isotype:

IgG

Applications:

ELISA, WB, IHC

Recommended dilutions:

ELISA:1:2000-1:10000, WB:1:1000-1:5000,
IHC:1:20-1:200

Protein Background:

Potential tumor suppressor. Seems to be involved in lymphocyte adhesion by linking RAP1A activation upon T-cell receptor or chemokine stimulation to integrin activation. Isoform 2 stimulates lymphocyte polarization and the patch-like distribution of ITGAL/LFA-1, resulting in an enhanced adhesion to ICAM1. Together with RAP1A may participate in regulation of microtubule growth. The association of isoform 2 with activated RAP1A is required for directional movement of endothelial cells during wound healing. May be involved in regulation of Ras apoptotic function. The RASSF5-STK4/MST1 complex may mediate HRAS and KRAS induced apoptosis.

Gene ID:

RASSF5

Uniprot

Q8WWW0

Synonyms:

Ras association domain-containing protein 5 (New ras effector 1) (Regulator for cell adhesion and polarization enriched in lymphoid tissues) (RAPL), RASSF5, NORE1 RAPL

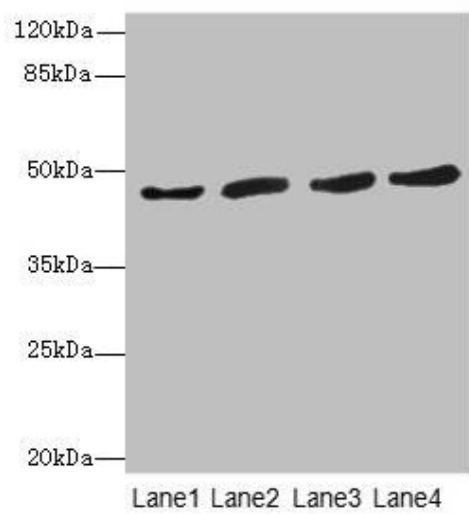
Immunogen:

Recombinant Human Ras association domain-containing protein 5 protein (1-265AA).

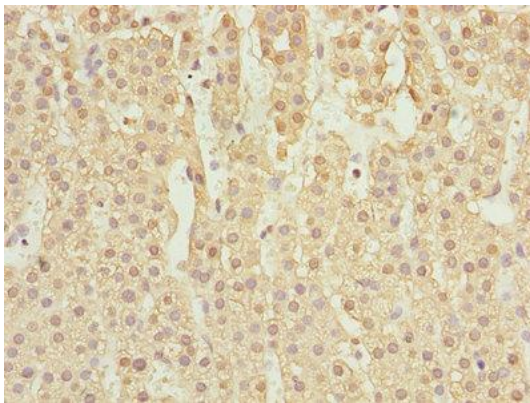
Storage:

PBS with 0.02% sodium azide, 50% glycerol, pH7.3.

Product Images



Western blot. All lanes: RASSF5 antibody at 5.46 μ g/ml. Lane 1: Thp-1 whole cell lysate. Lane 2: 293T whole cell lysate. Lane 3: Jurkat whole cell lysate. Lane 4: A549 whole cell lysate. Secondary: Goat polyclonal to rabbit IgG at 1/10000 dilution. Predicted band size: 48, 31, 38 kDa. Observed band size: 48 kDa.



Immunohistochemistry of paraffin-embedded human adrenal gland tissue using PACO44523 at dilution of 1:100.