

MTCH1 Antibody



PACO44542

Product Information

Size:

50ul

Reactivity:

Human

Source:

Rabbit

Isotype:

IgG

Applications:

ELISA, WB, IHC

Recommended dilutions:

ELISA:1:2000-1:10000, WB:1:1000-1:5000,
IHC:1:20-1:200

Protein Background:

Potential mitochondrial transporter. May play a role in apoptosis.

Gene ID:

MTCH1

Uniprot

Q9NZJ7

Synonyms:

Mitochondrial carrier homolog 1 (Presenilin-associated protein), MTCH1, PSAP

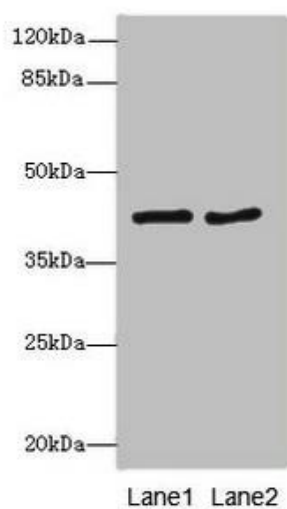
Immunogen:

Recombinant Human Mitochondrial carrier homolog 1 protein (100-250AA).

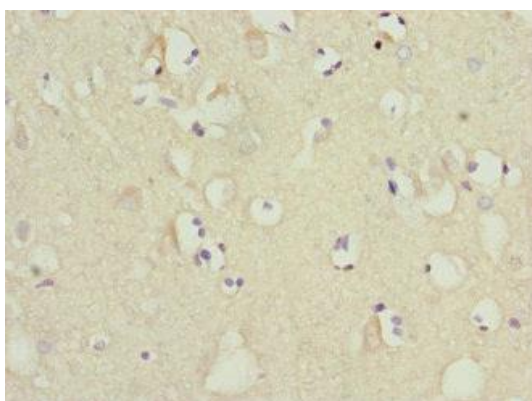
Storage:

PBS with 0.02% sodium azide, 50% glycerol, pH7.3.

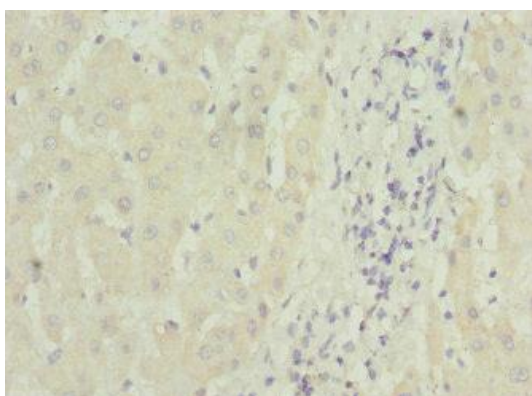
Product Images



Western blot. All lanes: MTCH1 antibody at 2.32 μ g/ml. Lane 1: MCF-7 whole cell lysate. Lane 2: HepG2 whole cell lysate. Secondary. Goat polyclonal to rabbit IgG at 1/10000 dilution. Predicted band size: 42, 40, 20 kDa. Observed band size: 42 kDa.



Immunohistochemistry of paraffin-embedded human brain tissue using PACO44542 at dilution of 1:100.



Immunohistochemistry of paraffin-embedded human liver tissue using PACO44542 at dilution of 1:100.