

Product Information

Size:

50ul

Reactivity:

Human

Source:

Rabbit

Isotype:

IgG

Applications:

ELISA, IHC

Recommended dilutions:

ELISA:1:2000-1:10000, IHC:1:20-1:200

Protein Background:

RNA-binding protein that function as a pre-mRNA splicing factor. Plays a critical role in both constitutive and enhancer-dependent splicing by mediating protein-protein interactions and protein-RNA interactions required for accurate 3'-splice site selection. Acts by enhancing the binding of U2AF2 to weak pyrimidine tracts. Also participates in the regulation of alternative pre-mRNA splicing. Activates exon 5 skipping of PTPRC during T-cell activation; an event reversed by GF11. Binds to RNA at the AG dinucleotide at the 3'-splice site. Shows a preference for AGC or AGA.

Gene ID:

U2AF1L4

Uniprot

Q8WU68

Synonyms:

Splicing factor U2AF 26 kDa subunit (U2 auxiliary factor 26) (U2 small nuclear RNA auxiliary factor 1-like protein 4) (U2AF1-like 4) (U2(RNU2) small nuclear RNA auxiliary factor 1-like protein 3) (U2 small nuclear RNA auxiliary factor 1-like protein 3) (U2AF1-like protein 3), U2AF1L4, U2AF1-RS3 U2AF1L3

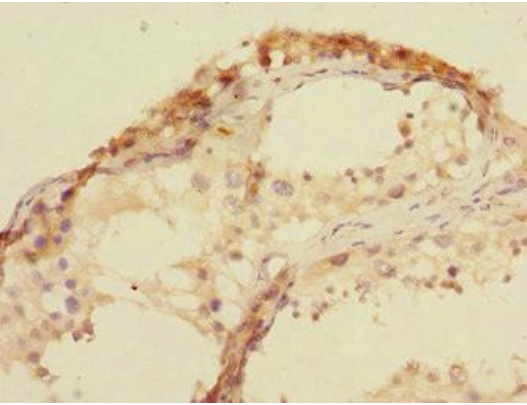
Immunogen:

Recombinant Human Splicing factor U2AF 26 kDa subunit protein (1-202AA).

Storage:

PBS with 0.02% sodium azide, 50% glycerol, pH7.3.

Product Images



Immunohistochemistry of paraffin-embedded human testis tissue using PACO44565 at dilution of 1:100.