
Product Information

Size:

50ul

Reactivity:

Human

Source:

Rabbit

Isotype:

IgG

Applications:

ELISA, WB, IHC

Recommended dilutions:

ELISA:1:2000-1:10000, WB:1:1000-1:5000,
IHC:1:20-1:200

Protein Background:

Transcriptional corepressor which facilitates transcriptional repression via its association with DNA-binding transcription factors and recruitment of other corepressors and histone-modifying enzymes. Can repress the expression of MMP7 in a ZBTB33-dependent manner. May function as a complex with the chimeric protein RUNX1/AML1-CBFA2T1/MTG8 which is produced in acute myeloid leukemia with the chromosomal translocation t(8;21). May thus be involved in the repression of AML1-dependent transcription and the induction of G-CSF/CSF3-dependent cell growth. May be a tumor suppressor gene candidate involved in myeloid tumors with the deletion of the 20q11 region.

Gene ID:

CBFA2T2

Uniprot

O43439

Synonyms:

Protein CBFA2T2 (ETO homologous on chromosome 20) (MTG8-like protein) (MTG8-related protein 1) (Myeloid translocation-related protein 1) (p85), CBFA2T2, EHT MTGR1

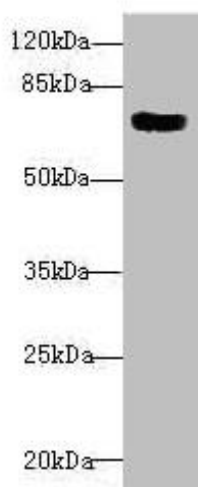
Immunogen:

Recombinant Human Protein CBFA2T2 protein (325-604AA).

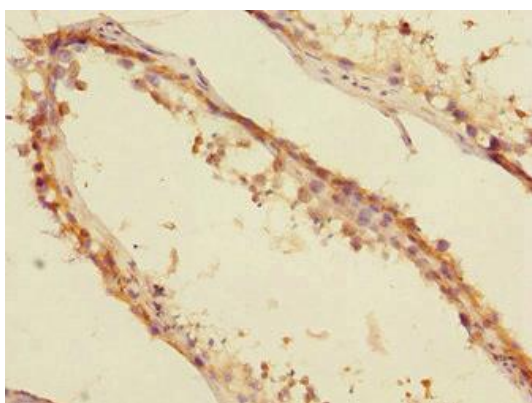
Storage:

PBS with 0.02% sodium azide, 50% glycerol, pH7.3.

Product Images



Western blot. All lanes: CBFA2T2 antibody at 1.82µg/ml + 293T whole cell lysate. Secondary. Goat polyclonal to rabbit IgG at 1/10000 dilution. Predicted band size: 68, 64, 29, 66 kDa. Observed band size: 68 kDa.



Immunohistochemistry of paraffin-embedded human testis tissue using PACO44570 at dilution of 1:100.