

## Product Information

**Size:**

50ul

**Reactivity:**

Human

**Source:**

Rabbit

**Isotype:**

IgG

**Applications:**

ELISA, IHC

**Recommended dilutions:**

ELISA:1:2000-1:10000, IHC:1:20-1:200

**Protein Background:**

Transcriptional regulator that binds to the GA element of the CLCNKA promoter. Binds to the KCNIP2 promoter and regulates KCNIP2 circadian expression in the heart. Is a repressor of CTGF expression, involved in the control of cardiac fibrosis. It is also involved in the control of cardiac hypertrophy acting through the inhibition of MEF2A and GATA4. Involved in podocyte differentiation. Inhibits MYOCD activity. Is a negative regulator of TP53 acetylation. Inhibits NF-kappa-B activation through repression of EP300-dependent RELA acetylation.

**Gene ID:**

KLF15

**Uniprot**

Q9UIH9

**Synonyms:**

Krueppel-like factor 15 (Kidney-enriched krueppel-like factor), KLF15, KKLf

**Immunogen:**

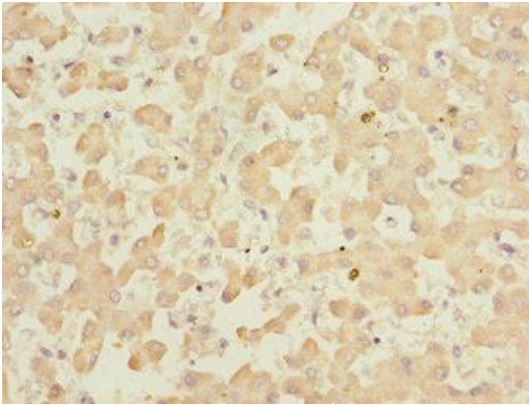
Recombinant Human Krueppel-like factor 15 protein (1-260AA).

**Storage:**

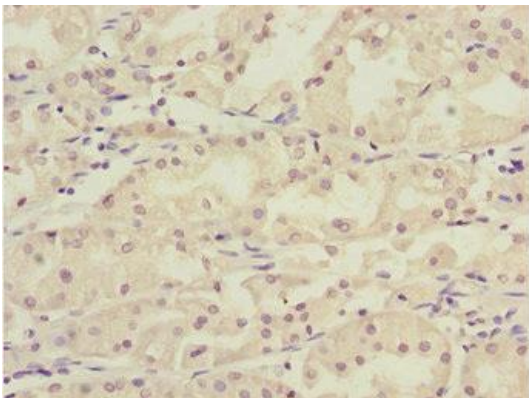
PBS with 0.02% sodium azide, 50% glycerol, pH7.3.

## Product Images

---



Immunohistochemistry of paraffin-embedded human liver tissue using PACO44583 at dilution of 1:100.



Immunohistochemistry of paraffin-embedded human gastric cancer using PACO44583 at dilution of 1:100.