

NR2E1 Antibody



PACO44590

Product Information

Size:

50ul

Reactivity:

Human, Mouse

Source:

Rabbit

Isotype:

IgG

Applications:

ELISA, WB, IHC

Recommended dilutions:

ELISA:1:2000-1:10000, WB:1:1000-1:5000,
IHC:1:20-1:200

Protein Background:

Orphan receptor that binds DNA as a monomer to hormone response elements (HRE) containing an extended core motif half-site sequence 5'-AAGGTCA-3' in which the 5' flanking nucleotides participate in determining receptor specificity. May be required to pattern anterior brain differentiation. Involved in the regulation of retinal development and essential for vision. During retinogenesis, regulates PTEN-Cyclin D expression via binding to the promoter region of PTEN and suppressing its activity. May be involved in retinoic acid, receptor (RAR) regulation in retinal cells.

Gene ID:

NR2E1

Uniprot

Q9Y466

Synonyms:

Nuclear receptor subfamily 2 group E member 1 (Nuclear receptor TLX) (Protein tailless homolog) (TII) (hTII), NR2E1, TLX

Immunogen:

Recombinant Human Nuclear receptor subfamily 2 group E member 1 protein (106-385AA).

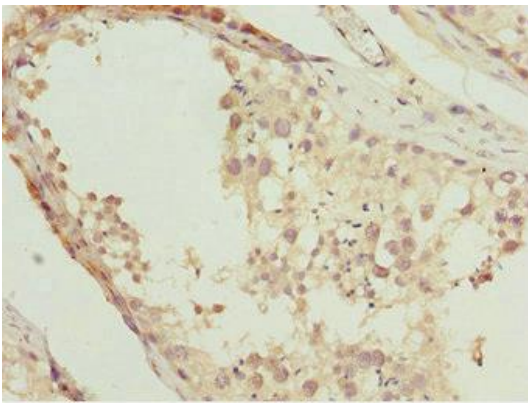
Storage:

PBS with 0.02% sodium azide, 50% glycerol, pH7.3.

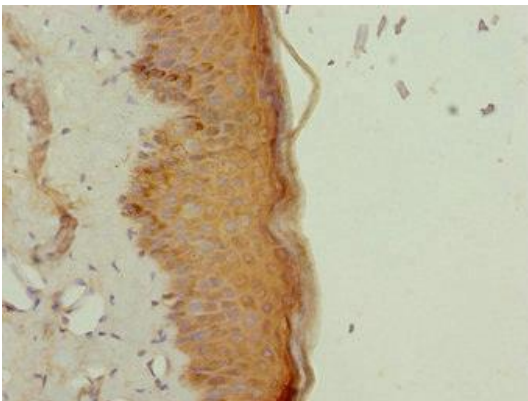
Product Images



Western blot. All lanes: NR2E1 antibody at 3.2 μ g/ml + Mouse brain tissue. Secondary. Goat polyclonal to rabbit IgG at 1/10000 dilution. Predicted band size: 43, 47 kDa. Observed band size: 43 kDa.



Immunohistochemistry of paraffin-embedded human testis tissue using PACO44590 at dilution of 1:100.



Immunohistochemistry of paraffin-embedded human skin tissue using PACO44590 at dilution of 1:100.