

# SYCE1 Antibody



PACO44596

---

## Product Information

**Size:**

50ul

**Reactivity:**

Human, Mouse

**Source:**

Rabbit

**Isotype:**

IgG

**Applications:**

ELISA, WB, IHC

**Recommended dilutions:**

ELISA:1:2000-1:10000, WB:1:1000-1:5000,  
IHC:1:20-1:200

**Protein Background:**

Major component of the transverse central element of synaptonemal complexes (SCS), formed between homologous chromosomes during meiotic prophase. Requires SYCP1 in order to be incorporated into the central element. May have a role in the synaptonemal complex assembly, stabilization and recombination.

**Gene ID:**

SYCE1

**Uniprot**

Q8N0S2

**Synonyms:**

Synaptonemal complex central element protein 1 (Cancer/testis antigen 76) (CT76), SYCE1, C10orf94

**Immunogen:**

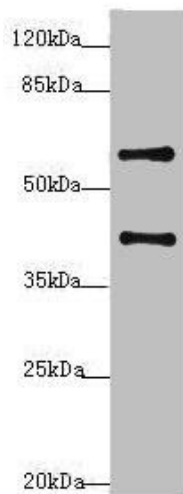
Recombinant Human Synaptonemal complex central element protein 1 protein (132-351AA).

**Storage:**

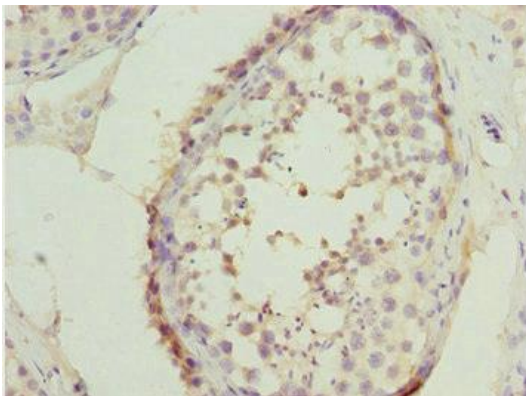
PBS with 0.02% sodium azide, 50% glycerol, pH7.3.

## Product Images

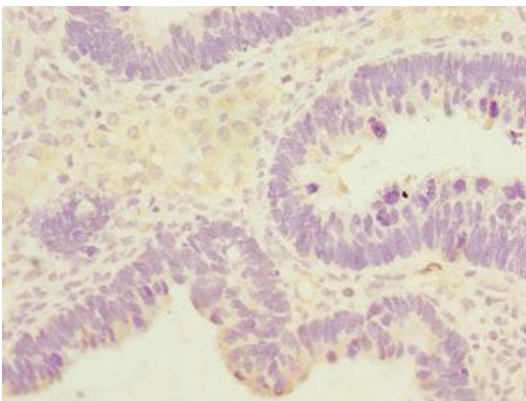
---



Western blot. All lanes: SYCE1 antibody at 3.38 $\mu$ g/ml + Mouse liver tissue. Secondary. Goat polyclonal to rabbit IgG at 1/10000 dilution. Predicted band size: 40, 33, 22 kDa. Observed band size: 40, 58 kDa.



Immunohistochemistry of paraffin-embedded human testis tissue using PACO44596 at dilution of 1:100.



Immunohistochemistry of paraffin-embedded human ovarian cancer using PACO44596 at dilution of 1:100.