

PACO44603

Product Information

Size:

50ul

Reactivity:

Human

Source:

Rabbit

Isotype:

IgG

Applications:

ELISA, WB, IHC

Recommended dilutions:

ELISA:1:2000-1:10000, WB:1:1000-1:5000,
IHC:1:20-1:200

Protein Background:

Catalyzes the phosphorylation of D-glucose to D-glucose 6-phosphate using ADP as the phosphate donor. GDP and CDP can replace ADP, but with reduced efficiency.

Gene ID:

ADPGK

Uniprot

Q9BRR6

Synonyms:

ADP-dependent glucokinase (ADP-GK) (ADPGK) (EC 2.7.1.147) (RbBP-35), ADPGK

Immunogen:

Recombinant Human ADP-dependent glucokinase protein (218-497AA).

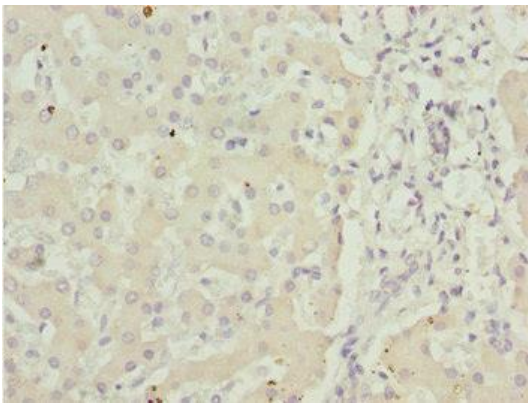
Storage:

PBS with 0.02% sodium azide, 50% glycerol, pH7.3.

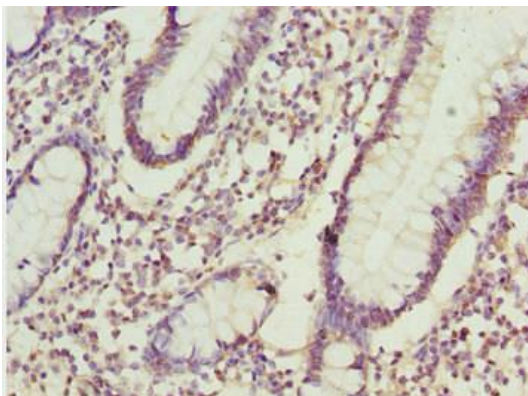
Product Images



Western blot. All lanes: ADPGK antibody at 1.02 μ g/ml + HeLa whole cell lysate. Secondary. Goat polyclonal to rabbit IgG at 1/10000 dilution. Predicted band size: 55, 54, 29, 25, 39, 9 kDa. Observed band size: 55 kDa.



Immunohistochemistry of paraffin-embedded human liver tissue using PACO44603 at dilution of 1:100.



Immunohistochemistry of paraffin-embedded human small intestine tissue using PACO44603 at dilution of 1:100.