

## Product Information

**Size:**

50ul

**Reactivity:**

Human

**Source:**

Rabbit

**Isotype:**

IgG

**Applications:**

ELISA, IHC

**Recommended dilutions:**

ELISA:1:2000-1:10000, IHC:1:20-1:200

**Protein Background:**

SNARE that may be involved in targeting and fusion of Golgi-derived retrograde transport vesicles with the ER. Required for maintenance of ER network. Implicated in the suppression of cell death. May be involved in mitochondrial autophagy.

**Gene ID:**

BNIP1

**Uniprot**

Q12981

**Synonyms:**

Vesicle transport protein SEC20 (BCL2/adenovirus E1B 19 kDa protein-interacting protein 1) (Transformation-related gene 8 protein) (TRG-8), BNIP1, NIP1 SEC20L

**Immunogen:**

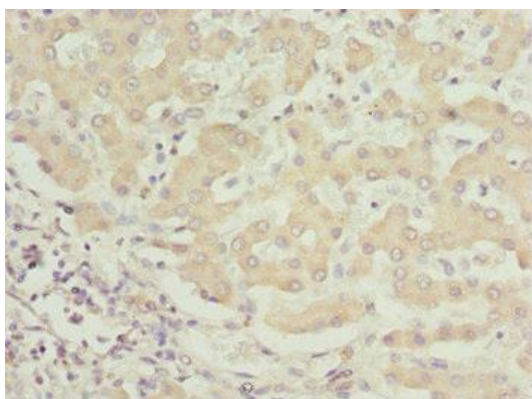
Recombinant Human Vesicle transport protein SEC20 protein (1-200AA).

**Storage:**

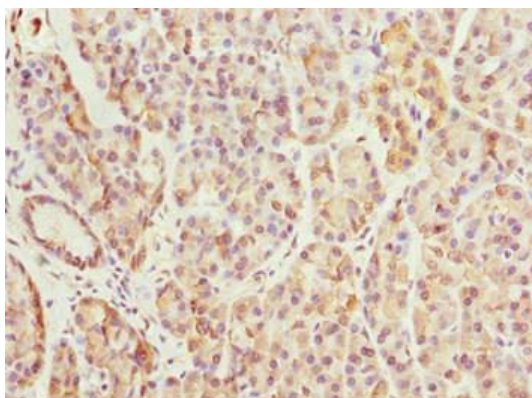
PBS with 0.02% sodium azide, 50% glycerol, pH7.3.

## Product Images

---



Immunohistochemistry of paraffin-embedded human liver tissue using PACO44612 at dilution of 1:100.



Immunohistochemistry of paraffin-embedded human pancreatic tissue using PACO44612 at dilution of 1:100.