

## Product Information

**Size:**

50ul

**Reactivity:**

Human

**Source:**

Rabbit

**Isotype:**

IgG

**Applications:**

ELISA, IHC

**Recommended dilutions:**

ELISA:1:2000-1:10000, IHC:1:20-1:200

**Protein Background:**

Key component of the cytosolic iron-sulfur protein assembly (CIA) complex, a multiprotein complex that mediates the incorporation of iron-sulfur cluster into extramitochondrial Fe/S proteins. Seems to specifically modulate the transactivation activity of WT1. As part of the mitotic spindle-associated MMXD complex it may play a role in chromosome segregation.

**Gene ID:**

CIAO1

**Uniprot**

O76071

**Synonyms:**

Probable cytosolic iron-sulfur protein assembly protein CIAO1 (WD repeat-containing protein 39), CIAO1, WDR39

**Immunogen:**

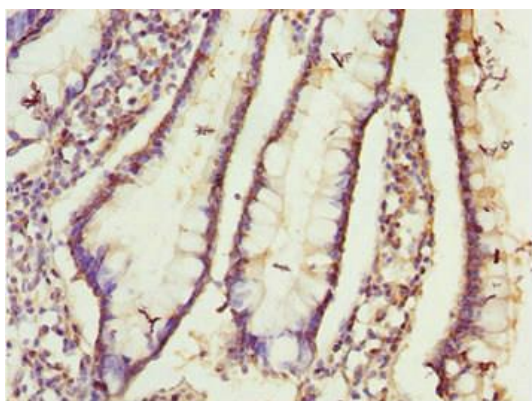
Recombinant Human Probable cytosolic iron-sulfur protein assembly protein CIAO1 protein (1-339AA).

**Storage:**

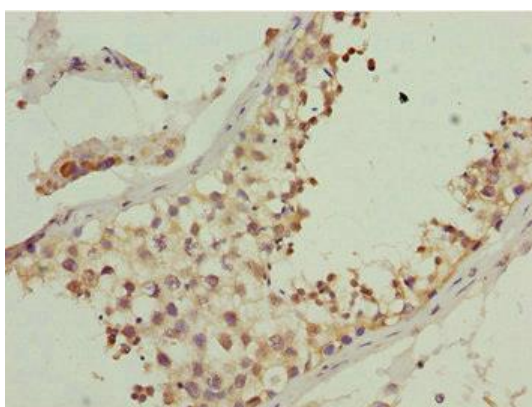
PBS with 0.02% sodium azide, 50% glycerol, pH7.3.

## Product Images

---



Immunohistochemistry of paraffin-embedded human small intestine tissue using PACO44617 at dilution of 1:100.



Immunohistochemistry of paraffin-embedded human testis tissue using PACO44617 at dilution of 1:100.