

EEF1A2 Antibody



PACO44625

Product Information

Size:

50ul

Reactivity:

Human

Source:

Rabbit

Isotype:

IgG

Applications:

ELISA, WB, IHC

Recommended dilutions:

ELISA:1:2000-1:10000, WB:1:1000-1:5000,
IHC:1:20-1:200

Protein Background:

This protein promotes the GTP-dependent binding of aminoacyl-tRNA to the A-site of ribosomes during protein biosynthesis.

Gene ID:

EEF1A2

Uniprot

Q05639

Synonyms:

Elongation factor 1-alpha 2 (EF-1-alpha-2) (Eukaryotic elongation factor 1 A-2) (eEF1A-2) (Statin-S1), EEF1A2, EEF1AL STN

Immunogen:

Recombinant Human Elongation factor 1-α 2 protein (184-463AA).

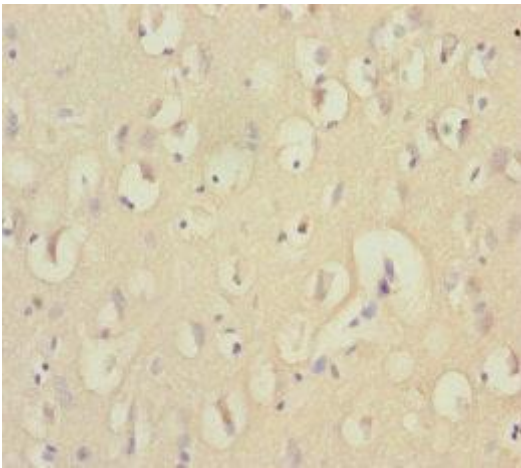
Storage:

PBS with 0.02% sodium azide, 50% glycerol, pH7.3.

Product Images



Western blot. All lanes: EF1A2 antibody at 2.23 μ g/ml. Lane 1: MCF-7 whole cell lysate. Lane 2: HeLa whole cell lysate. Lane 3: Raji whole cell lysate. Secondary. Goat polyclonal to rabbit IgG at 1/10000 dilution. Predicted band size: 50 kDa. Observed band size: 50 kDa.



Immunohistochemistry of paraffin-embedded human brain tissue using PACO44625 at dilution of 1:100.