
Product Information

Size:

50ul

Reactivity:

Human, Mouse

Source:

Rabbit

Isotype:

IgG

Applications:

ELISA, WB, IHC

Recommended dilutions:

ELISA:1:2000-1:10000, WB:1:1000-1:5000,
IHC:1:20-1:200

Protein Background:

Transcriptional activator that may play a role in regulating epithelial cell differentiation and proliferation. May act as a repressor for a specific subset of ETS/AP-1-responsive genes and as a modulator of the nuclear response to mitogen-activated protein kinase signaling cascades. Binds to DNA sequences containing the consensus nucleotide core sequence GGAA. Involved in regulation of TNFRSF10B/DR5 expression through Ets-binding sequences on the TNFRSF10B/DR5 promoter. May contribute to development and carcinogenesis by acting as a tumor suppressor gene or anti-oncogene.

Gene ID:

EHF

Uniprot

Q9NZC4

Synonyms:

ETS homologous factor (hEHF) (ETS domain-containing transcription factor) (Epithelium-specific Ets transcription factor 3) (ESE-3), EHF, ESE3 ESE3B ESEJ

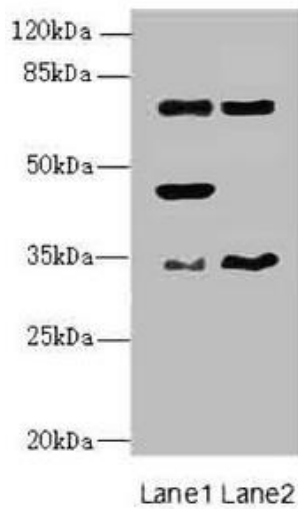
Immunogen:

Recombinant Human ETS homologous factor protein (1-210AA).

Storage:

PBS with 0.02% sodium azide, 50% glycerol, pH7.3.

Product Images



Western blot. All lanes: EHF antibody at 4.95 μ g/ml. Lane 1: Mouse brain tissue. Lane 2: Mouse lung tissue. Secondary. Goat polyclonal to rabbit IgG at 1/10000 dilution. Predicted band size: 35, 33, 38 kDa. Observed band size: 35, 45, 63 kDa.



Immunohistochemistry of paraffin-embedded human skeletal muscle tissue using PACO44627 at dilution of 1:100.