

# ELF2 Antibody



PACO44629

---

## Product Information

**Size:**

50ul

**Reactivity:**

Human, Mouse

**Source:**

Rabbit

**Isotype:**

IgG

**Applications:**

ELISA, WB, IHC

**Recommended dilutions:**

ELISA:1:2000-1:10000, WB:1:1000-1:5000,  
IHC:1:20-1:200

**Protein Background:**

Isoform 1 transcriptionally activates the LYN and BLK promoters and acts synergistically with RUNX1 to transactivate the BLK promoter.

**Gene ID:**

ELF2

**Uniprot**

Q15723

**Synonyms:**

ETS-related transcription factor Elf-2 (E74-like factor 2) (New ETS-related factor), ELF2, NERF

**Immunogen:**

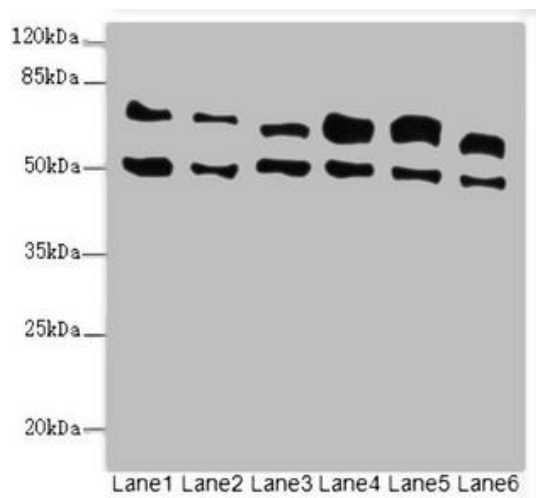
Recombinant Human ETS-related transcription factor Elf-2 protein (1-140AA).

**Storage:**

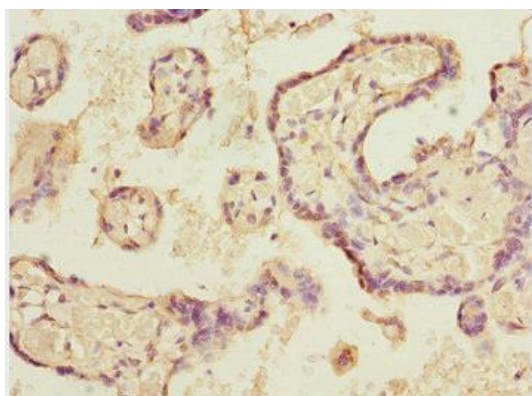
PBS with 0.02% sodium azide, 50% glycerol, pH7.3.

## Product Images

---



Western blot. All lanes: ELF2 antibody at 3.35 $\mu$ g/ml. Lane 1: HL60 whole cell lysate. Lane 2: A549 whole cell lysate. Lane 3: MCF-7 whole cell lysate. Lane 4: Jurkat whole cell lysate. Lane 5: Hela whole cell lysate. Lane 6: Mouse lung tissue. Secondary: Goat polyclonal to rabbit IgG at 1/10000 dilution. Predicted band size: 64, 63, 57, 58, 55 kDa. Observed band size: 64, 50 kDa.



Immunohistochemistry of paraffin-embedded human placenta tissue using PACO44629 at dilution of 1:100.