

ELF2 Antibody



PACO44630

Product Information

Size:

50ul

Reactivity:

Human

Source:

Rabbit

Isotype:

IgG

Applications:

ELISA, WB, IHC

Recommended dilutions:

ELISA:1:2000-1:10000, WB:1:1000-1:5000,
IHC:1:20-1:200

Protein Background:

Isoform 1 transcriptionally activates the LYN and BLK promoters and acts synergistically with RUNX1 to transactivate the BLK promoter.

Gene ID:

ELF2

Uniprot

Q15723

Synonyms:

ETS-related transcription factor Elf-2 (E74-like factor 2) (New ETS-related factor), ELF2, NERF

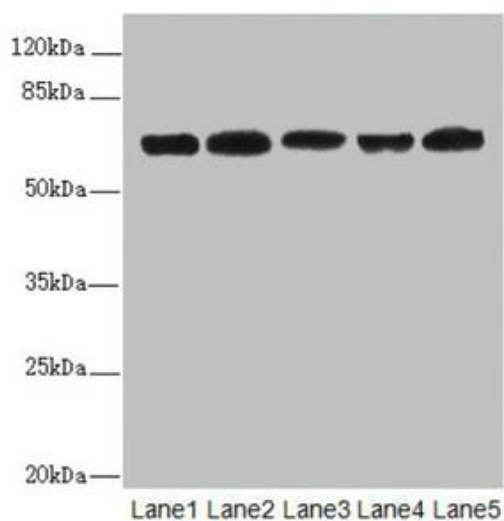
Immunogen:

Recombinant Human ETS-related transcription factor Elf-2 protein (1-140AA).

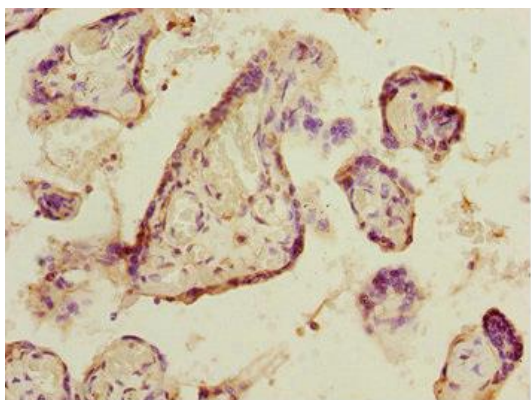
Storage:

PBS with 0.02% sodium azide, 50% glycerol, pH7.3.

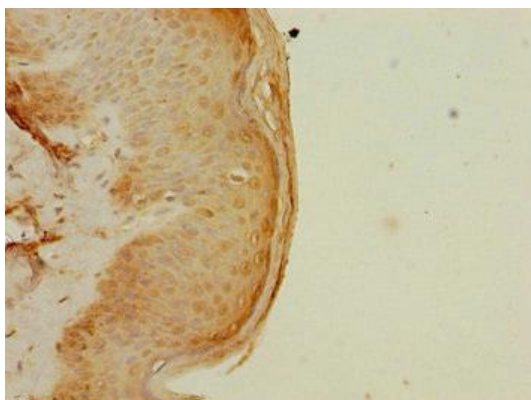
Product Images



Western blot. All lanes: ELF2 antibody at 2.27 μ g/ml. Lane 1: HL60 whole cell lysate. Lane 2: A549 whole cell lysate. Lane 3: MCF-7 whole cell lysate. Lane 4: Jurkat whole cell lysate. Lane 5: HeLa whole cell lysate. Secondary. Goat polyclonal to rabbit IgG at 1/10000 dilution. Predicted band size: 64, 63, 57, 58, 55 kDa. Observed band size: 64, 50 kDa.



Immunohistochemistry of paraffin-embedded human placenta tissue using PACO44630 at dilution of 1:100.



Immunohistochemistry of paraffin-embedded human skin tissue using PACO44630 at dilution of 1:100.