

PACO44637

---

## Product Information

**Size:**

50ul

**Reactivity:**

Human, Mouse

**Source:**

Rabbit

**Isotype:**

IgG

**Applications:**

ELISA, WB, IHC

**Recommended dilutions:**

ELISA:1:2000-1:10000, WB:1:1000-1:5000,  
IHC:1:20-1:200

**Protein Background:**

Required for MAP kinase p38 (MAPK11, MAPK12, MAPK13 and/or MAPK14) activation during gastrulation. Required for down-regulation of E-cadherin during gastrulation by regulating E-cadherin protein level downstream from NCK-interacting kinase (NIK) and independently of the regulation of transcription by FGF signaling and Snail. Required for starvation-induced ATG9A trafficking during autophagy.

**Gene ID:**

SUPT20H

**Uniprot**

Q8NEM7

**Synonyms:**

Transcription factor SPT20 homolog (p38-interacting protein) (p38IP), SUPT20H, C13orf19 FAM48A

**Immunogen:**

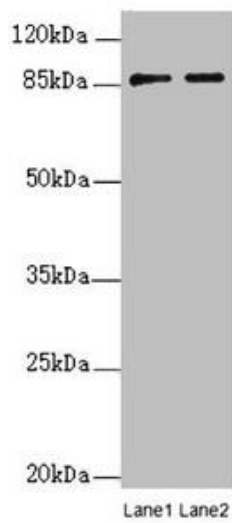
Recombinant Human Transcription factor SPT20 homolog protein (580-779AA).

**Storage:**

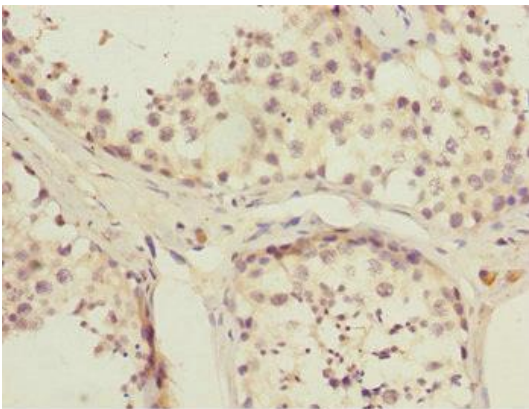
PBS with 0.02% sodium azide, 50% glycerol, pH7.3.

## Product Images

---



Western blot. All lanes: SUPT20H antibody at 0.21 $\mu$ g/ml. Lane 1: Mouse lung tissue. Lane 2: Mouse kidney tissue. Secondary: Goat polyclonal to rabbit IgG at 1/10000 dilution. Predicted band size: 86, 81, 89 kDa. Observed band size: 86 kDa.



Immunohistochemistry of paraffin-embedded human testis tissue using PACO44637 at dilution of 1:100.