

---

## Product Information

**Size:**

50ul

**Reactivity:**

Human

**Source:**

Rabbit

**Isotype:**

IgG

**Applications:**

ELISA, IHC

**Recommended dilutions:**

ELISA:1:2000-1:10000, IHC:1:20-1:200

**Protein Background:**

Ubiquitin-like modifier that increases cell-surface expression of kappa-type opioid receptor through facilitating anterograde intracellular trafficking of the receptor. Involved in formation of autophagosomal vacuoles. Whereas LC3s are involved in elongation of the phagophore membrane, the GABARAP/GATE-16 subfamily is essential for a later stage in autophagosome maturation.

**Gene ID:**

GABARAPL1

**Uniprot**

Q9H0R8

**Synonyms:**

Gamma-aminobutyric acid, receptor-associated protein-like 1 (Early estrogen-regulated protein) (GABA(A) receptor-associated protein-like 1) (Glandular epithelial cell protein 1) (GEC-1), GABARAPL1, GEC1

**Immunogen:**

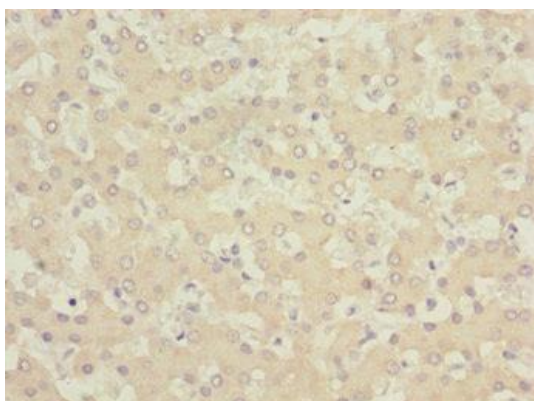
Recombinant Human Gamma-aminobutyric acid, receptor-associated protein-like 1 protein (1-117AA).

**Storage:**

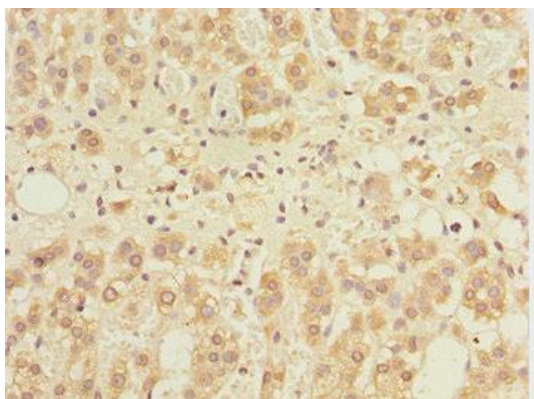
PBS with 0.02% sodium azide, 50% glycerol, pH7.3.

## Product Images

---



Immunohistochemistry of paraffin-embedded human liver tissue using PACO44641 at dilution of 1:100.



Immunohistochemistry of paraffin-embedded human adrenal gland tissue using PACO44641 at dilution of 1:100.