

# GTF2A2 Antibody



PACO44643

---

## Product Information

**Size:**

50ul

**Reactivity:**

Human

**Source:**

Rabbit

**Isotype:**

IgG

**Applications:**

ELISA, IHC

**Recommended dilutions:**

ELISA:1:2000-1:10000, IHC:1:20-1:200

**Protein Background:**

TFIIA is a component of the transcription machinery of RNA polymerase II and plays an important role in transcriptional activation. TFIIA in a complex with TBP mediates transcriptional activity.

**Gene ID:**

GTF2A2

**Uniprot**

P52657

**Synonyms:**

Transcription initiation factor IIA subunit 2 (General transcription factor IIA subunit 2) (TFIIA p12 subunit) (TFIIA-12) (TFIIAS) (Transcription initiation factor IIA gamma chain) (TFIIA-gamma), GTF2A2, TF2A2

**Immunogen:**

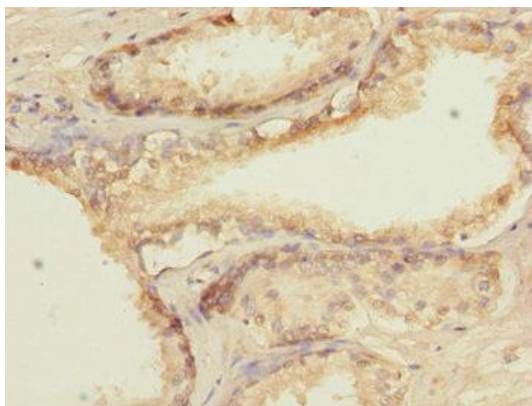
Recombinant Human Transcription initiation factor IIA subunit 2 protein (1-109AA).

**Storage:**

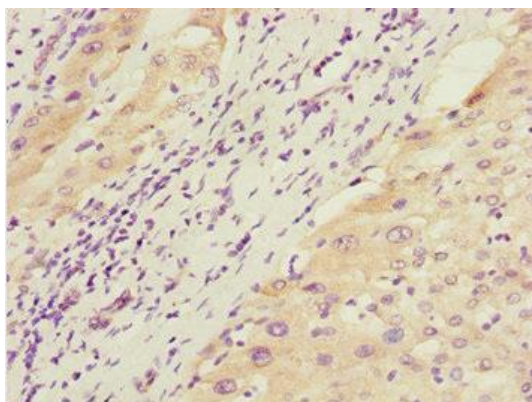
PBS with 0.02% sodium azide, 50% glycerol, pH7.3.

## Product Images

---



Immunohistochemistry of paraffin-embedded human prostate cancer using PACO44643 at dilution of 1:100.



Immunohistochemistry of paraffin-embedded human liver cancer using PACO44643 at dilution of 1:100.