

RFPL2 Antibody



PACO44681

Product Information

Size:

50ul

Reactivity:

Human

Source:

Rabbit

Isotype:

IgG

Applications:

ELISA, WB, IHC

Recommended dilutions:

ELISA:1:2000-1:10000, WB:1:1000-1:5000,
IHC:1:20-1:200

Protein Background:

Gene ID:

RFPL2

Uniprot

O75678

Synonyms:

Ret finger protein-like 2 (RING finger protein 79), RFPL2, RNF79

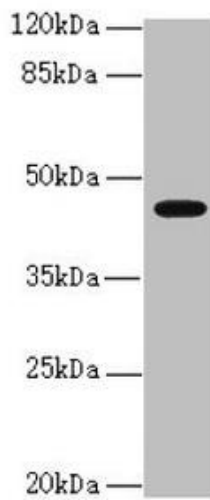
Immunogen:

Recombinant Human Ret finger protein-like 2 protein (99-378AA).

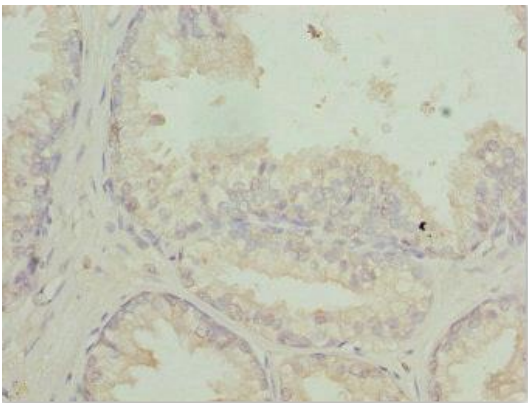
Storage:

PBS with 0.02% sodium azide, 50% glycerol, pH7.3.

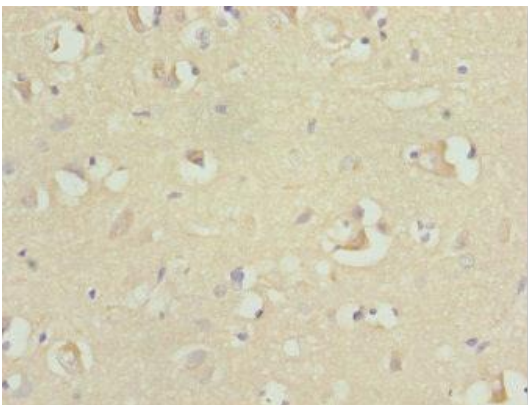
Product Images



Western blot. All lanes: RFPL2 antibody at 3.36 μ g/ml + MCF-7 whole cell lysate. Secondary. Goat polyclonal to rabbit IgG at 1/10000 dilution. Predicted band size: 43, 33, 36 kDa. Observed band size: 43 kDa.



Immunohistochemistry of paraffin-embedded human prostate cancer using PACO44681 at dilution of 1:100.



Immunohistochemistry of paraffin-embedded human brain tissue using PACO44681 at dilution of 1:100.